

DOCUMENT RESUME

ED 444 660

JC 000 614

AUTHOR Wilson, Alan; Hart, Esther; Conway, Chris
 TITLE Profile of B.C. College Transfer Students Admitted to the University of Victoria, 1993/94 to 1997/98.
 INSTITUTION Victoria Univ. (British Columbia).
 SPONS AGENCY Victoria Univ. (British Columbia).
 PUB DATE 1999-02-00
 NOTE 53p.; Prepared by the University of Victoria, Office of Institutional Analysis.
 AVAILABLE FROM For full text: <http://www.bccat.bc.ca>.
 PUB TYPE Numerical/Quantitative Data (110) -- Reports - Research (143)
 EDRS PRICE MF01/PC03 Plus Postage.
 DESCRIPTORS College Graduates; *College Transfer Students; Community Colleges; Foreign Countries; Higher Education; Outcomes of Education; *Student Characteristics; *Transfer Rates (College)
 IDENTIFIERS *British Columbia; *University of Victoria BC

ABSTRACT

This report examines the profile of transfer students admitted to the University of Victoria (UVic) from British Columbia (BC) colleges from 1993/94 to 1997/98. In addition to BC college transfers and high school entrants, students admitted to UVic may be in the following categories: degree holder, BC university transfer, out-of-province secondary, out-of-province university, special access (mature, disabled), out-of-province college, or other. Section A, which includes tables 1-9, provides a profile of all 6,753 BC college transfers admitted to UVic by: year of admission, college, total transfer credit units, session type and full-time/part-time status, faculty, degree expected, program area, age interval, gender, and admission average. Section B examines the UVic performance of BC college entrants and is composed of tables 10-13. Tables 10 and 11 provide a profile of all BC college transfer students who first registered and commenced studies at UVic in any session between summer 1993 and winter 1997/98. Tables 12 and 13 focus on those who entered between summer 1993 and winter 1994/95 and hence have had sufficient time to earn a credential. Section C, composed of tables 14-17, focuses on the 1,937 BC college transfer students admitted between 1993-1998 who have graduated. Includes an appendix of definitions and technical notes is included. (VWC)

Profile of BC College Transfer Students Admitted to the University of Victoria 1993/94 to 1997/98

February 1999

Prepared by:

**Alan Wilson
Esther Hart
Chris Conway**

Office of Institutional Analysis
University of Victoria

PERMISSION TO REPRODUCE AND DISSEMINATE THIS MATERIAL HAS BEEN GRANTED BY

J. Karliński

TO THE EDUCATIONAL RESOURCES INFORMATION CENTER (ERIC)

1

U.S. DEPARTMENT OF EDUCATION
Office of Educational Research and Improvement
EDUCATIONAL RESOURCES INFORMATION CENTER (ERIC)

This document has been reproduced as received from the person or organization originating it.

Minor changes have been made to improve reproduction quality.

Points of view or opinions stated in this document do not necessarily represent official OERI position or policy.

555 SEYMOUR STREET
SUITE 709
VANCOUVER, BC
V6B 3H6
CANADA

TEL: 604-412-7700
FAX: 604-683-0576

EMAIL: admin@bccat.bc.ca
WEB: www.bccat.bc.ca

Prepared for and Funded by the

BRITISH COLUMBIA COUNCIL ON
ADMISSIONS & TRANSFER

SUPPORTING BC'S
EDUCATION SYSTEM

BEST COPY AVAILABLE

JC000614

**Profile of B.C. College Transfer Students
Admitted to the University of Victoria
1993-94 to 1997-98**

**by Alan Wilson
Esther Hart
Chris Conway
Office of Institutional Analysis
University of Victoria
P.O. Box 1700
Victoria, BC V8W 2Y2
telephone (250) 721-8029**

**Funding for this project was provided by
The British Columbia Council on Admissions and Transfer
709 - 555 Seymour Street
Vancouver, BC, V6B 3H6
telephone (604) 412-7700
facsimile (604) 683-0576
e-mail admin@bccat.bc.ca
world wide web: www.bccat.bc.ca**

**© Copyright 1999
The British Columbia Council on Admissions and Transfer**

**Photocopying and further distribution of this document is permitted
Please credit Source**

TABLE OF CONTENTS

INTRODUCTION	4
A. PROFILE OF B.C. COLLEGE TRANSFER STUDENTS	8
Table 1 - B.C. College Transfers Admitted to UVic by Year of Admission	9
Figure 1 - B.C. College Transfers Admitted to UVic by College	10
Table 2 - B.C. College Transfers Admitted to UVic by Total Transfer Credit Units	11
Table 3 - B.C. College Transfers Admitted to UVic by Session Type and Full-Time/Part-Time Status	12
Table 4 - B.C. College Transfers Admitted to UVic by Faculty	13
Table 5 - B.C. College Transfers Admitted to UVic by Degree Expected	14
Table 6 - B.C. College Transfers Admitted to UVic by Program Area	15
Table 7 - B.C. College Transfers Admitted to UVic by Age Interval	17
Table 8 - B.C. College Transfers Admitted to UVic by Gender	18
Table 9 - B.C. College Transfers Admitted to UVic by Admission Average	19
B. ACADEMIC PERFORMANCE OF B.C. COLLEGE TRANSFER STUDENTS	20
Table 10 - Academic Performance of B.C. College Transfers Admitted to UVic	21
Table 11 - Course Performance of B.C. College Transfers Admitted to UVic	22
Figure 2 - Academic Performance Comparison of B.C. High School Entrants and B.C. College Transfers Admitted to UVic	34
Table 12 - Graduation Rates of B.C. College Transfers Admitted to UVic by Total Transfer Credit Units	36
Table 13 - Cumulative UVic GPA of B.C. College Transfers Admitted to UVic Who Graduated	38
Figure 3 - Cumulative UVic GPA Comparison of B.C. High School Entrants and B.C. College Transfers Admitted to UVic	40
C. PROFILE OF B.C. COLLEGE TRANSFER STUDENTS WHO GRADUATED	41
Table 14 - Academic Performance of B.C. College Transfers Admitted to UVic Who Graduated	42
Table 15 - Graduation Area of B.C. College Transfers Admitted to UVic	43
Table 16 - Credentials Awarded to B.C. College Transfers Admitted to UVic	45
Table 17 - Years to Graduation for B.C. College Transfers Admitted to UVic by Credential Awarded	46
D. PROFILE OF STUDENTS WITH COLLEGE EXPERIENCE	47
Table 18 - Students With College Experience Admitted to UVic by Year of Admission	48
Table 19 - Students With College Experience Admitted to UVic by Age Interval	49
Table 20 - Students With College Experience Admitted to UVic by Gender	50
APPENDIX	51
Definitions and Technical Notes	51

INTRODUCTION

The *Profile of B.C. College Transfer Students Admitted to the University of Victoria 1993/94 to 1997/98* examines the population of college transfer students who entered the university during the last five years. It is modelled on a similar report produced by the Office of Analytical Studies at Simon Fraser University, with some tables modified to reflect the different academic structure at UVic. In contrast to SFU, which has three equal semesters, the UVic academic year is divided into a four-month summer session and an eight-month winter session. During the last five years, 89% of B.C. college transfers and 99% of B.C. high school entrants began their work at UVic during a winter session.

In addition to B.C. college transfers and B.C. high school entrants, students may be admitted to UVic in a number of other categories as tabulated below.

<u>Students by Admission Category</u>												
<u>Category</u>	<u>1993/94</u>	<u>%</u>	<u>1994/95</u>	<u>%</u>	<u>1995/96</u>	<u>%</u>	<u>1996/97</u>	<u>%</u>	<u>1997/98</u>	<u>%</u>	<u>Total</u>	<u>%</u>
BC High School	1,001	26.9	1,512	34.5	2,088	38.0	1,914	37.4	1,685	34.5	8,200	34.7
BC College Transfer	1,136	30.6	1,329	30.3	1,512	27.5	1,384	27.0	1,392	28.5	6,753	28.6
Degree Holder	396	10.7	436	9.9	403	7.3	455	8.9	364	7.5	2,054	8.7
BC University Transfer	290	7.8	301	6.9	329	6.0	255	5.0	283	5.8	1,458	6.2
Out-of-Province Secondary	147	4.0	144	3.3	330	6.0	286	5.6	339	6.9	1,246	5.3
Out-of-Province University	114	3.1	153	3.5	203	3.7	223	4.4	205	4.2	898	3.8
Special Access (Mature, Disabled)	345	9.3	213	4.9	147	2.7	75	1.5	65	1.3	845	3.6
Out-of-Province College	86	2.3	122	2.8	112	2.0	161	3.1	171	3.5	652	2.8
Other	201	5.4	178	4.1	368	6.7	368	7.2	377	7.7	1,492	6.3
Total	3,716	100	4,388	100	5,492	100	5,121	100	4,881	100	23,598	100

between summer 1993 and winter 1997/98. In contrast to the SFU report, this group includes the 438 students (6.5%) who withdrew sometime during their first session. For someone who began in September in a winter session, this withdrawal could have been as late as February, after the completion of fall courses.

Table 1 tabulates B.C. college transfers by college and year of admission. Counts of students admitted from B.C. high schools are included for comparison. Most of these will have entered UVic directly after graduation, but some may have entered later. Due to stringent admission requirements for high school graduates in 1993/94, the intake of college transfers was actually higher. **Figure 1** displays the colleges by the number of student transfers. Not surprisingly, Camosun College leads all others by a wide margin as a source. Malaspina University-College is a distant second, and the Okanagan University College is third.

Table 2 tabulates B.C. college transfers by college and transfer credits. Nearly a third of all transfer students entered with at least 27.5 units. Note that not all transfer units may be applicable to all degrees.

Table 3 breaks down entrants by session type. For winter session entrants, the full-time/part-time status is also displayed. Full-time requires enrolment in at least twelve units of course work for students not enrolled in a co-op program. All co-op students are defined as full-time. As noted above, about 11% of B.C. college transfer students began in the summer, compared to only 1% of B.C. high school entrants. About three-quarters of B.C. high school winter session entrants entered UVic as full-time, while about half of B.C. college transfer students entered as full-time.

Though **Table 4**, which tabulates the faculty entered, has been included to correspond to the SFU report, it is not particularly meaningful. The vast majority of B.C. high school entrants started in UVic's general Faculty of Arts and Science. Usually, first year students cannot enter the Faculties of Business, Education, Human and Social Development, or Law. Because most college transfer students enter UVic at a second year level or higher, they can directly enter these faculties. Thus this table is more a reflection of year level than degree intention.

Table 5 displays B.C. college transfers by degree expected. The majority enrolled in one of the many BA degree programs. Since UVic students are not required to declare a degree program until third year, many appeared as undeclared.

Most B.C. college transfer students do not specify an area of study during their first session. The program areas displayed in **Table 6** are hence combinations of faculty and degree expected data.

The age distribution of college transfer students is displayed in **Table 7**. On average, college entrants are five years older (23.4) than high school entrants (18.1). Entrants from BCIT are older (28.7) than entrants from other colleges.

Table 8 shows B.C. college transfers by gender. In both B.C. college transfers and B.C. high school entrants, females predominate, representing 58% of all entrants. Of the 18 colleges, only Coquitlam provided more males than females.

Table 9 tabulates B.C. college transfers by admission average, the overall mean being 73.1 and the overall median 73.0. The minimum admission average requirement for B.C. college transfers was 69 in 1993/94, and 60 in 1994/95, 1995/96, 1996/97 and 1997/98.

Section B examines the UVic performance of B.C. college entrants, and is composed of tables 10-13. Like section A, tables 10 and 11 provide a profile of all 6,753 B.C. college transfer students who first registered and commenced studies at UVic in any session between summer 1993 and winter 1997/98. Tables 12 and 13 focus on those who entered between summer 1993 and winter 1994/95, and hence have had sufficient time to earn a credential.

In addition to the admission average, **Table 10** gives the first session grade point average, graduating grade point average, and cumulative grade point average of B.C. college entrants. A grade point is a numerical value given to a letter grade, with 9 equivalent to A⁺, 8 to A, 7 to A⁻, 6 to B⁺, 5 to B, 4 to B⁻, 3 to C⁺, 2 to C, 1 to D, and 0 to failure. The graduating GPA of a student in a bachelor's degree program is based on grades in 300 and 400 level (and in Education, 700 level) courses acceptable within the degree program being taken. The cumulative GPA is based on all courses taken while at the university. Students from BCIT, the University College of the Fraser Valley, and the College of New Caledonia attained the highest graduating and cumulative GPAs.

Table 11 spans twelve pages, and compares the performance of B.C. college and B.C. high school entrants for a selection of high-enrollment courses. For college categories with only one or two students in a given course, the mean admission average and average course grade are not given. **Figure 2** summarizes the average grades of B.C. college transfers and B.C. high school entrants for these thirty-five courses. In all but one of the courses, the high school entrants scored higher than the college entrants. It should be noted, however, that many of the college students were attending university for the first time, while most, if not all, of the high school students had attended UVic in a previous session.

Table 12 tabulates the graduation rates of B.C. college transfers, by college and total transfer credit units at the time of admission, for those who entered in 1993/94 or 1994/95. Not surprisingly, these tend to be higher for those who entered with more transfer credits, and hence were further along in their programs. Note again that, in contrast to the SFU report, those who withdrew during their first session are included. The overall graduation rate of B.C. college transfer students is 58.8%, but some who entered in 1992/93 or 1993/94 are still at UVic and will graduate in the future.

As shown in **Table 13**, the 1,937 graduating B.C. college transfer students who entered between 1993/94 and 1997/98 had a mean cumulative GPA of 5.60. As noted above, the cumulative GPA is based on all courses taken while at UVic. **Figure 3** compares the cumulative GPA of B.C. college transfers with B.C. high school entrants. Since high school entrants usually begin UVic at the first year level, rather than at the second or third year level like college transfers, only 531 have graduated. They outperformed the students from all of the colleges except the University College of the Fraser Valley and BCIT, with a mean cumulative GPA of 6.05.

Section C, composed of tables 14-17, focuses on the 1,937 B.C. college transfer students admitted during the last five years who have graduated.

Table 14 summarizes the grade performance of this group. As in table 10, which examined the performance of all college entrants, students from the University College of the Fraser Valley, BCIT, and the College of New Caledonia, had the highest grades.

Table 15 is the distribution of B.C. college transfers by graduation area. Most common are degrees in Psychology and English.

Table 16 shows the distribution by degree awarded. The most common degree is a BA, with a BSc a distant second.

Table 17 shows the average number of years to graduation by credential awarded, the overall average being 2.8. This period of time is measured from when the student first entered UVic, whether enrolment was continuous from the time of entry to the time of graduation or not.

Section D, comprised of tables 18-20, profiles the 2,193 students who were not admitted to UVic on the basis of work at a B.C. college, but who attended a B.C. college sometime in the past. This group includes those admitted on the basis of a B.C. high school, mature students, students from another university, etc. In cases where more than one college was attended, the most recent is chosen.

Table 18 tabulates the students with college experience by year of admission. As in table 1, the three top sources of students with college experience admitted to UVic are Camosun College, Okanagan University College, and Malaspina University-College.

Table 19, which gives the age distribution of students with college experience, shows that, with a mean age of 31.2, they are considerably older than college transfer students, whose mean age from table 7 is 23.4.

Table 20 tabulates the gender distribution of students with college experience. Almost three-quarters are female.

Section A

PROFILE OF B.C. COLLEGE TRANSFER STUDENTS

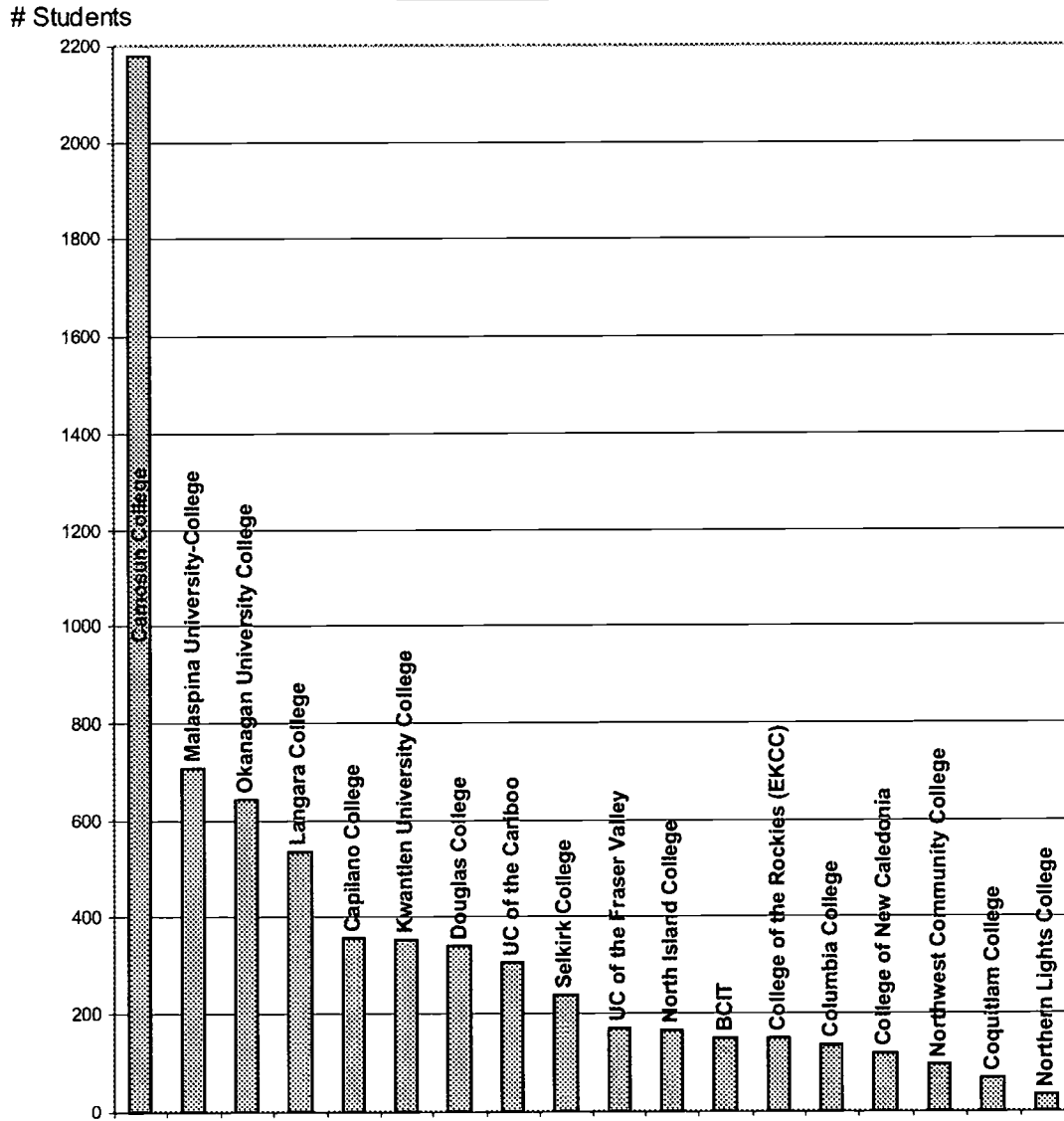
Table 1
B.C. College Transfers Admitted To UVic By Year Of Admission

<u>Region/College</u>	<u>1993/94</u>	<u>1994/95</u>	<u>1995/96</u>	<u>1996/97</u>	<u>1997/98</u>	<u>Total</u>	<u>Total</u>
Non Lower Mainland							
<u>Northern B.C.</u>							
College of New Caledonia	35	23	24	18	19	119	160
Northern Lights College	3	5	7	10	8	33	38
Northwest Community College	12	23	23	20	18	96	114
	<u>50</u>	<u>51</u>	<u>54</u>	<u>48</u>	<u>45</u>	<u>248</u>	<u>312</u>
<u>Interior/Kootenays</u>							
College of the Rockies (EKCC)	43	33	31	21	20	148	201
Okanagan University College	114	151	125	137	119	646	756
Selkirk College	45	50	47	49	46	237	271
UC of the Cariboo	54	64	66	58	65	307	356
	<u>256</u>	<u>298</u>	<u>269</u>	<u>265</u>	<u>250</u>	<u>1,338</u>	<u>1,584</u>
<u>Vancouver Island</u>							
Camosun College	340	445	504	438	451	2,178	2,556
Malaspina University-College	162	130	147	111	158	708	874
North Island College	25	31	29	46	35	166	190
	<u>527</u>	<u>606</u>	<u>680</u>	<u>595</u>	<u>644</u>	<u>3,052</u>	<u>3,620</u>
Total Non Lower Mainland	833	955	1,003	908	939	4,638	5,516
Lower Mainland							
<u>Public</u>							
BCTT	37	15	26	39	34	151	169
Capilano College	53	76	93	73	63	358	402
Douglas College	45	49	90	72	84	340	382
Kwantlen University College	43	59	86	89	76	353	396
UC of the Fraser Valley	33	35	37	32	33	170	185
Langara College	64	95	136	125	118	538	616
	<u>275</u>	<u>329</u>	<u>468</u>	<u>430</u>	<u>408</u>	<u>1,910</u>	<u>2,150</u>
<u>Private</u>							
Columbia College	21	30	25	34	26	136	157
Coquitlam College	7	15	16	12	19	69	71
	<u>28</u>	<u>45</u>	<u>41</u>	<u>46</u>	<u>45</u>	<u>205</u>	<u>228</u>
Total Lower Mainland	303	374	509	476	453	2,115	2,378
Total B.C. College Transfers	1,136	1,329	1,512	1,384	1,392	6,753	7,894
Total B.C. High School Entrants	1,001	1,512	2,088	1,914	1,685	8,200	9,198

Percentage Distribution

Non Lower Mainland							
Northern B.C.	4.4	3.8	3.6	3.5	3.2	3.7	4.0
Interior/Kootenays	22.5	22.4	17.8	19.1	18.0	19.8	20.1
Vancouver Island	46.4	45.6	45.0	43.0	46.3	45.2	45.9
Total Non Lower Mainland	73.3	71.9	66.3	65.6	67.5	68.7	69.9
Lower Mainland							
Public	24.2	24.8	31.0	31.1	29.3	28.3	27.2
Private	2.5	3.4	2.7	3.3	3.2	3.0	2.9
Total Lower Mainland	26.7	28.1	33.7	34.4	32.5	31.3	30.1
Grand Total	100.0	100.0	100.0	100.0	100.0	100.0	100.0

Figure 1
BC College Transfers Amitted to Uvic by College
1993/94 to 1997/98



Source: Table 1

Table 2
B.C. College Transfers Admitted To UVic By Total Transfer Credit Units
(1993/94 to 1997/98)

<u>Region/College</u>	<u><15</u>	<u>15-17</u>	<u>17.5-19.5</u>	<u>20-22</u>	<u>22.5-24.5</u>	<u>25-27</u>	<u>≥27.5</u>	<u>Total</u>
Non Lower Mainland								
<u>Northern B.C.</u>								
College of New Caledonia	23	19	10	15	16	15	21	119
Northern Lights College	8	4	4	0	2	0	15	33
Northwest Community College	13	32	11	6	7	7	20	96
	<u>44</u>	<u>55</u>	<u>25</u>	<u>21</u>	<u>25</u>	<u>22</u>	<u>56</u>	<u>248</u>
<u>Interior/Kootenays</u>								
College of the Rockies (EKCC)	13	16	10	5	7	11	86	148
Okanagan University College	87	145	49	25	50	42	248	646
Selkirk College	19	55	19	6	18	29	91	237
UC of the Cariboo	54	46	27	14	35	26	105	307
	<u>173</u>	<u>262</u>	<u>105</u>	<u>50</u>	<u>110</u>	<u>108</u>	<u>530</u>	<u>1,338</u>
<u>Vancouver Island</u>								
Camosun College	387	326	277	130	223	259	576	2,178
Malaspina University-College	67	98	47	30	73	95	298	708
North Island College	44	33	10	4	13	15	47	166
	<u>498</u>	<u>457</u>	<u>334</u>	<u>164</u>	<u>309</u>	<u>369</u>	<u>921</u>	<u>3,052</u>
Total Non Lower Mainland	715	774	464	235	444	499	1,507	4,638
Lower Mainland								
<u>Public</u>								
BCIT	18	11	3	2	5	23	89	151
Capilano College	59	57	45	13	38	42	104	358
Douglas College	44	36	45	19	35	31	130	340
Kwantlen University College	69	58	56	29	39	23	79	353
UC of the Fraser Valley	33	18	17	10	19	21	52	170
Langara College	57	51	67	25	61	45	232	538
	<u>280</u>	<u>231</u>	<u>233</u>	<u>98</u>	<u>197</u>	<u>185</u>	<u>686</u>	<u>1,910</u>
<u>Private</u>								
Columbia College	20	36	29	10	25	8	8	136
Coquitlam College	7	16	16	9	9	5	7	69
	<u>27</u>	<u>52</u>	<u>45</u>	<u>19</u>	<u>34</u>	<u>13</u>	<u>15</u>	<u>205</u>
Total Lower Mainland	307	283	278	117	231	198	701	2,115
Total B.C. College Transfers	1,022	1,057	742	352	675	697	2,208	6,753

Percentage Distribution

Non Lower Mainland								
Nothem B.C.	17.7	22.2	10.1	8.5	10.1	8.9	22.6	100.0
Interior/Kootenays	12.9	19.6	7.8	3.7	8.2	8.1	39.6	100.0
Vancouver Island	<u>16.3</u>	<u>15.0</u>	<u>10.9</u>	<u>5.4</u>	<u>10.1</u>	<u>12.1</u>	<u>30.2</u>	<u>100.0</u>
Total Non Lower Mainland	15.4	16.7	10.0	5.1	9.6	10.8	32.5	100.0
Lower Mainland								
Public	14.7	12.1	12.2	5.1	10.3	9.7	35.9	100.0
Private	13.2	25.4	22.0	9.3	16.6	6.3	7.3	100.0
Total Lower Mainland	14.5	13.4	13.1	5.5	10.9	9.4	33.1	100.0
Grand Total	15.1	15.7	11.0	5.2	10.0	10.3	32.7	100.0

Table 3
B.C. College Transfers Admitted To UVic By Session Type and Full-Time/Part-Time Status
(1993/94 to 1997/98)

Region/College	Summer	Winter FT	Winter PT	Total	Percentage	
					Winter FT	Winter PT
Non Lower Mainland						
<u>Northern B.C.</u>						
College of New Caledonia	6	71	42	119	62.8	37.2
Northern Lights College	2	14	17	33	45.2	54.8
Northwest Community College	11	54	31	96	63.5	36.5
	<u>19</u>	<u>139</u>	<u>90</u>	<u>248</u>	<u>60.7</u>	<u>39.3</u>
<u>Interior/Kootenays</u>						
College of the Rockies (EKCC)	7	108	33	148	76.6	23.4
Okanagan University College	25	421	200	646	67.8	32.2
Selkirk College	10	146	81	237	64.3	35.7
UC of the Cariboo	5	187	115	307	61.9	38.1
	<u>47</u>	<u>862</u>	<u>429</u>	<u>1,338</u>	<u>66.8</u>	<u>33.2</u>
<u>Vancouver Island</u>						
Camosun College	290	762	1,126	2,178	40.4	59.6
Malaspina University-College	70	378	260	708	59.2	40.8
North Island College	11	93	62	166	60.0	40.0
	<u>371</u>	<u>1,233</u>	<u>1,448</u>	<u>3,052</u>	<u>46.0</u>	<u>54.0</u>
Total Non Lower Mainland	437	2,234	1,967	4,638	53.2	46.8
Lower Mainland						
<u>Public</u>						
BCIT	9	64	78	151	45.1	54.9
Capilano College	35	176	147	358	54.5	45.5
Douglas College	48	123	169	340	42.1	57.9
Kwantlen University College	31	165	157	353	51.2	48.8
UC of the Fraser Valley	13	105	52	170	66.9	33.1
Langara College	89	176	273	538	39.2	60.8
	<u>225</u>	<u>809</u>	<u>876</u>	<u>1,910</u>	<u>48.0</u>	<u>52.0</u>
<u>Private</u>						
Columbia College	45	38	53	136	41.8	58.2
Coquitlam College	16	14	39	69	26.4	73.6
	<u>61</u>	<u>52</u>	<u>92</u>	<u>205</u>	<u>36.1</u>	<u>63.9</u>
Total Lower Mainland	286	861	968	2,115	47.1	52.9
Total B.C. College Transfers	723	3,095	2,935	6,753	51.2	48.7
Total B.C. High School Entrants	69	5,854	2,277	8,200	72.0	28.0

BEST COPY AVAILABLE

Table 4
B.C. College Transfers Admitted to UVic by Faculty
(1993/94 to 1997/98)

<u>Region/College</u>	<u>Arts & Science</u>	<u>Busi-ness</u>	<u>Edu-cation</u>	<u>Engi-neering</u>	<u>Fine Arts</u>	<u>Human & Social Develop-ment</u>	<u>Law</u>	<u>Total</u>
Non Lower Mainland								
<u>Northern B.C.</u>								
College of New Caledonia	83	3	18	4	3	8	0	119
Northern Lights College	17	1	0	0	2	12	1	33
Northwest Community College	63	3	4	3	4	19	0	96
	<u>163</u>	<u>7</u>	<u>22</u>	<u>7</u>	<u>9</u>	<u>39</u>	<u>1</u>	<u>248</u>
<u>Interior/Kootenays</u>								
College of the Rockies (EKCC)	55	0	78	6	0	9	0	148
Okanagan University College	416	28	47	70	35	49	1	646
Selkirk College	143	7	16	25	9	37	0	237
UC of the Canboo	174	16	23	26	19	48	1	307
	<u>788</u>	<u>51</u>	<u>164</u>	<u>127</u>	<u>63</u>	<u>143</u>	<u>2</u>	<u>1,338</u>
<u>Vancouver Island</u>								
Camosun College	1,631	68	84	109	60	223	3	2,178
Malaspina University-College	432	34	76	40	59	66	1	708
North Island College	99	10	11	6	7	32	1	166
	<u>2,162</u>	<u>112</u>	<u>171</u>	<u>155</u>	<u>126</u>	<u>321</u>	<u>5</u>	<u>3,052</u>
Total Non Lower Mainland	3,113	170	357	289	198	503	8	4,638
Lower Mainland								
<u>Public</u>								
BCTI	24	1	0	50	1	75	0	151
Capilano College	259	12	9	15	26	36	1	358
Douglas College	198	11	19	8	34	70	0	340
Kwantlen University College	257	5	14	16	22	39	0	353
UC of the Fraser Valley	96	3	9	21	3	35	3	170
Langara College	325	24	10	15	22	141	1	538
	<u>1,159</u>	<u>56</u>	<u>61</u>	<u>125</u>	<u>108</u>	<u>396</u>	<u>5</u>	<u>1,910</u>
<u>Private</u>								
Columbia College	103	20	0	11	0	2	0	136
Coquitlam College	56	8	0	2	0	2	1	69
	<u>159</u>	<u>28</u>	<u>0</u>	<u>13</u>	<u>0</u>	<u>4</u>	<u>1</u>	<u>205</u>
Total Lower Mainland	1,318	84	61	138	108	400	6	2,115
Total B.C. College Transfers	4,431	254	418	427	306	903	14	6,753
Total B.C. High School Entrants	6,904	2	0	561	664	68	1	8,200

Percentage Distribution

Non Lower Mainland								
Northern B.C.	65.7	2.8	8.9	2.8	3.6	15.7	0.4	100.0
Interior/Kootenays	58.9	3.8	12.3	9.5	4.7	10.7	0.1	100.0
Vancouver Island	70.8	3.7	5.6	5.1	4.1	10.5	0.2	100.0
Total Non Lower Mainland	67.1	3.7	7.7	6.2	4.3	10.8	0.2	100.0
Lower Mainland								
Public	60.7	2.9	3.2	6.5	5.7	20.7	0.3	100.0
Private	77.6	13.7	0.0	6.3	0.0	2.0	0.5	100.0
Total Lower Mainland	62.3	4.0	2.9	6.5	5.1	18.9	0.3	100.0
Grand Total College Transfers	65.6	3.8	6.2	6.3	4.5	13.4	0.2	100.0
High School Entrants	84.2	0.0	0.0	6.8	8.1	0.8	0.0	100.0

Table 5
B.C. College Transfers Admitted To UVic by Degree Expected
(1993/94 to 1997/98)

<u>Degree Expected</u>	<u># of Students</u>	<u>% of Students</u>	<u>Admission Average</u>
Bachelor of Arts	2,214	32.8	73.0
Bachelor of Commerce	364	5.4	74.4
Bachelor of Education	376	5.6	75.9
Bachelor of Engineering	311	4.6	76.7
Bachelor of Fine Arts	152	2.3	75.2
Bachelor of Music	59	0.9	72.4
Bachelor of Science	1,131	16.7	73.2
Bachelor of Nursing	498	7.4	73.8
Bachelor of Social Work	70	1.0	78.3
Non-Degree	38	0.6	74.8
Arts & Science Undeclared	1,262	18.7	71.0
Human & Social Development Undeclared	219	3.2	73.5
Other	59	1.1	64.3
Total	6,753	100.0	73.2

Note: Excluded from the admission average column are college transfer students with no recorded post-secondary average. They may have no recorded average because they aren't really college transfer students, because they are Nursing or Law students whose averages aren't entered, or because of errors or omissions.

BEST COPY AVAILABLE

Table 6
B.C. College Transfers Admitted To UVic by Program Area
(1993/94 to 1997/98)

<u>Region/College</u>	<u>Arts</u>	<u>Com- merce</u>	<u>Edu- cation</u>	<u>Engi- neering</u>	<u>Fine Arts</u>	<u>Music</u>	<u>Science</u>
Non Lower Mainland							
<u>Northern B.C.</u>							
College of New Caledonia	47	6	15	4	3	0	26
Northern Lights College	9	1	0	0	1	0	5
Northwest Community College	31	6	4	2	1	0	16
	<u>87</u>	<u>13</u>	<u>19</u>	<u>6</u>	<u>5</u>	<u>0</u>	<u>47</u>
<u>Interior/Kootenays</u>							
College of the Rockies (EKCC)	17	3	77	6	0	0	22
Okanagan University College	200	49	47	49	25	2	139
Selkirk College	67	11	12	20	6	1	50
UC of the Cariboo	81	19	19	22	11	3	59
	<u>365</u>	<u>82</u>	<u>155</u>	<u>97</u>	<u>42</u>	<u>6</u>	<u>270</u>
<u>Vancouver Island</u>							
Camosun College	804	103	83	78	25	5	420
Malaspina University-College	247	56	61	16	38	10	119
North Island College	45	14	11	5	5	0	20
	<u>1,096</u>	<u>173</u>	<u>155</u>	<u>99</u>	<u>68</u>	<u>15</u>	<u>559</u>
Total Non Lower Mainland	1,548	268	329	202	115	21	876
Lower Mainland							
<u>Public</u>							
BCIT	6	1	0	48	1	0	9
Capilano College	164	14	8	11	6	7	47
Douglas College	78	11	16	5	10	23	36
Kwantlen University College	136	5	13	15	12	4	44
UC of the Fraser Valley	57	5	8	18	2	0	21
Langara College	167	30	6	11	9	4	58
	<u>608</u>	<u>66</u>	<u>51</u>	<u>108</u>	<u>40</u>	<u>38</u>	<u>215</u>
<u>Private</u>							
Columbia College	41	23	0	2	0	0	27
Coquitlam College	17	9	0	0	0	0	13
	<u>58</u>	<u>32</u>	<u>0</u>	<u>2</u>	<u>0</u>	<u>0</u>	<u>40</u>
Total Lower Mainland	666	98	51	110	40	38	255
Total B.C. College Transfers	2,214	366	380	312	155	59	1,131
Total B.C. High School Entrants	1,913	2	0	430	446	130	2,237

BEST COPY AVAILABLE

Table 6 (Cont'd)
B.C. College Transfers Admitted To UVic by Program Area
(1993/94 to 1997/98)

<u>Region/College</u>	<u>Nursing</u>	<u>Social Work</u>	<u>Arts & Science Unspecified</u>	<u>Human & Social Development</u>	<u>Other</u>	<u>Total</u>
Non Lower Mainland						
<u>Northern B.C.</u>						
College of New Caledonia	1	1	11	3	2	119
Northern Lights College	1	3	4	7	2	33
Northwest Community College	2	4	17	12	1	96
	<u>4</u>	<u>8</u>	<u>32</u>	<u>22</u>	<u>5</u>	<u>248</u>
<u>Interior/Kootenays</u>						
College of the Rockies (EKCC)	4	1	14	3	1	148
Okanagan University College	19	7	87	16	6	646
Selkirk College	17	8	34	8	3	237
UC of the Cariboo	9	2	44	33	5	307
	<u>49</u>	<u>18</u>	<u>179</u>	<u>60</u>	<u>15</u>	<u>1,338</u>
<u>Vancouver Island</u>						
Camosun College	125	4	467	51	13	2178
Malaspina University-College	17	19	100	16	9	708
North Island College	19	6	34	6	1	166
	<u>161</u>	<u>29</u>	<u>601</u>	<u>73</u>	<u>23</u>	<u>3,052</u>
Total Non Lower Mainland	214	55	812	155	43	4,638
Lower Mainland						
<u>Public</u>						
BCIT	70	0	10	3	3	151
Capilano College	19	2	69	8	3	358
Douglas College	48	2	94	16	1	340
Kwantlen University College	23	2	90	7	2	353
UC of the Fraser Valley	11	8	26	11	3	170
Langara College	111	1	111	27	3	538
	<u>282</u>	<u>15</u>	<u>400</u>	<u>72</u>	<u>15</u>	<u>1,910</u>
<u>Private</u>						
Columbia College	1	0	41	1	0	136
Coquitlam College	1	0	28	0	1	69
	<u>2</u>	<u>0</u>	<u>69</u>	<u>1</u>	<u>1</u>	<u>205</u>
Total Lower Mainland	284	15	469	73	16	2,115
Total B.C. College Transfers	498	70	1,281	228	59	6,753
Total B.C. High School Entrants	49	0	2,952	10	23	8,200

BEST COPY AVAILABLE

Table 7
B.C. College Transfers Admitted to UVic by Age Interval
(1993/94 to 1997/98)

<u>Region/College</u>	<u><20</u>	<u>20-24</u>	<u>25-29</u>	<u>30-34</u>	<u>35-39</u>	<u>>39</u>	<u>Total</u>	<u>Average</u>
Non Lower Mainland								
<u>Northern B.C.</u>								
College of New Caledonia	39	62	10	4	3	1	119	21.6
Northern Lights College	4	13	4	2	6	4	33	28.1
Northwest Community College	28	46	6	5	7	4	96	23.4
	<u>71</u>	<u>121</u>	<u>20</u>	<u>11</u>	<u>16</u>	<u>9</u>	<u>248</u>	<u>23.2</u>
<u>Interior/Kootenays</u>								
College of the Rockies (EKCC)	18	90	20	8	6	6	148	23.6
Okanagan University College	175	379	47	20	11	14	646	22.0
Selkirk College	67	113	18	11	10	18	237	23.7
UC of the Cariboo	63	188	19	9	14	14	307	23.2
	<u>323</u>	<u>770</u>	<u>104</u>	<u>48</u>	<u>41</u>	<u>52</u>	<u>1,338</u>	<u>22.8</u>
<u>Vancouver Island</u>								
Camosun College	214	1,402	297	130	61	74	2,178	23.7
Malaspina University-College	131	416	67	32	29	33	708	23.5
North Island College	51	68	12	10	7	18	166	24.6
	<u>396</u>	<u>1,886</u>	<u>376</u>	<u>172</u>	<u>97</u>	<u>125</u>	<u>3,052</u>	<u>23.7</u>
Total Non Lower Mainland	790	2,777	500	231	154	186	4,638	23.4
Lower Mainland								
<u>Public</u>								
BCIT	2	55	32	31	14	17	151	28.7
Capilano College	73	216	48	10	5	6	358	22.4
Douglas College	21	212	51	28	14	14	340	24.6
Kwantlen University College	57	259	20	7	6	4	353	21.8
UC of the Fraser Valley	39	95	16	7	7	6	170	23.1
Langara College	40	343	91	28	19	17	538	24.1
	<u>232</u>	<u>1,180</u>	<u>258</u>	<u>111</u>	<u>65</u>	<u>64</u>	<u>1,910</u>	<u>23.7</u>
<u>Private</u>								
Columbia College	15	111	6	1	2	1	136	22.0
Coquitlam College	4	58	5	2	0	0	69	22.5
	<u>19</u>	<u>169</u>	<u>11</u>	<u>3</u>	<u>2</u>	<u>1</u>	<u>205</u>	<u>22.2</u>
Total Lower Mainland	251	1,349	269	114	67	65	2,115	23.6
Total B.C. College Transfers	1,041	4,126	769	345	221	251	6,753	23.4
Total B.C. High School Entrants	7,707	400	38	16	11	28	8,200	18.1

Percentage Distribution

Non Lower Mainland							
Northern B.C.	28.6	48.8	8.1	4.4	6.5	3.6	100.0
Interior/Kootenays	24.1	57.5	7.8	3.6	3.1	3.9	100.0
Vancouver Island	13.0	61.8	12.3	5.6	3.2	4.1	100.0
Total Non Lower Mainland	17.0	59.9	10.8	5.0	3.3	4.0	100.0
Lower Mainland							
Public	12.1	61.8	13.5	5.8	3.4	3.4	100.0
Private	9.3	82.4	5.4	1.5	1.0	0.5	100.0
Total Lower Mainland	11.9	63.8	12.7	5.4	3.2	3.1	100.0
Grand Total College Transfers	15.4	61.1	11.4	5.1	3.3	3.7	100.0
High School Entrants	94.0	4.9	0.5	0.2	0.1	0.3	100.0

Table 8
B.C. College Transfers Admitted To UVic By Gender
(1993/94 to 1997/98)

<u>Region/College</u>	<u>Male</u>	<u>Female</u>	<u>Total</u>	<u>Percentage</u>	
				<u>Male</u>	<u>Female</u>
Non Lower Mainland					
<u>Northern B.C.</u>					
College of New Caledonia	50	69	119	42.0	58.0
Northern Lights College	8	25	33	24.2	75.8
Northwest Community College	35	61	96	36.5	63.5
	<u>93</u>	<u>155</u>	<u>248</u>	<u>37.5</u>	<u>62.5</u>
<u>Interior/Kootenays</u>					
College of the Rockies (EKCC)	38	110	148	25.7	74.3
Okanagan University College	311	335	646	48.1	51.9
Selkirk College	107	130	237	45.1	54.9
UC of the Cariboo	133	174	307	43.3	56.7
	<u>589</u>	<u>749</u>	<u>1,338</u>	<u>44.0</u>	<u>56.0</u>
<u>Vancouver Island</u>					
Camosun College	920	1,258	2,178	42.2	57.8
Malaspina University-College	289	419	708	40.8	59.2
North Island College	56	110	166	33.7	66.3
	<u>1,265</u>	<u>1,787</u>	<u>3,052</u>	<u>41.4</u>	<u>58.6</u>
Total Non Lower Mainland	<u>1,947</u>	<u>2,691</u>	<u>4,638</u>	<u>42.0</u>	<u>58.0</u>
Lower Mainland					
<u>Public</u>					
BCIT	64	87	151	42.4	57.6
Capilano College	159	199	358	44.4	55.6
Douglas College	122	218	340	35.9	64.1
Kwantlen University College	151	202	353	42.8	57.2
UC of the Fraser Valley	75	95	170	44.1	55.9
Langara College	199	339	538	37.0	63.0
	<u>770</u>	<u>1,140</u>	<u>1,910</u>	<u>40.3</u>	<u>59.7</u>
<u>Private</u>					
Columbia College	63	73	136	46.3	53.7
Coquitlam College	40	29	69	58.0	42.0
	<u>103</u>	<u>102</u>	<u>205</u>	<u>50.2</u>	<u>49.8</u>
Total Lower Mainland	<u>873</u>	<u>1,242</u>	<u>2,115</u>	<u>41.3</u>	<u>58.7</u>
Total B.C. College Transfers	2,820	3,933	6,753	41.8	58.2
Total B.C. High School Entrants	3,481	4,719	8,200	42.5	57.5

BEST COPY AVAILABLE

Table 9
B.C. College Transfers Admitted To UVic By Admission Average
(1993/94 to 1997/98)

<u>Average</u>	<u># of Students</u>	<u>% of Total</u>
<60	24	0.4
60	80	1.2
61	64	0.9
62	86	1.3
63	113	1.7
64	133	2.0
65	175	2.6
66	187	2.8
67	277	4.1
68	332	4.9
69	408	6.0
70	422	6.2
71	418	6.2
72	380	5.6
73	430	6.4
74	369	5.5
75	373	5.5
76	360	5.3
77	282	4.2
78	288	4.3
79	238	3.5
80	265	3.9
81	209	3.1
82	165	2.4
83	158	2.3
84	108	1.6
85	65	1.0
≥86	172	2.5
Not Available	172	2.5
Total	6,753	100
Median	73.0	
Mean	73.1	

Note: Excluded from the admission average column are college transfer students with no recorded post-secondary average. They may have no recorded average because they aren't really college transfer students, because they are Nursing or Law students whose averages aren't entered, or because of errors or omissions.

Section B

ACADEMIC PERFORMANCE OF B.C. COLLEGE TRANSFER STUDENTS

Table 10
Academic Performance of B.C. College Transfers Admitted To Uvic
(1993/94 to 1997/98)

<u>Region/College</u>	<u># of Admitted Students</u>	<u>Admission Average</u>	<u>1st Session GPA</u>	<u># of Graduating Students</u>	<u>Graduating GPA</u>	<u>Cumulative GPA</u>
Non Lower Mainland						
<u>Northern B.C.</u>						
College of New Caledonia	119	73.4	4.73	42	6.15	5.91
Northern Lights College	33	75.2	4.94	4	5.08	4.43
Northwest Community College	96	73.0	4.12	19	6.13	5.90
	248	73.5	4.53	65	6.08	5.82
<u>Interior/Kootenays</u>						
College of the Rockies (EKCC)	148	74.7	5.44	55	5.89	5.68
Okanagan University College	646	74.4	5.10	216	5.81	5.63
Selkirk College	237	74.7	4.75	72	6.02	5.75
UC of the Cariboo	307	74.0	5.09	93	5.86	5.70
	1,338	74.4	5.07	436	5.87	5.67
<u>Vancouver Island</u>						
Camosun College	2,178	73.5	4.72	547	5.82	5.62
Malaspina University-College	708	74.4	4.87	251	5.83	5.67
North Island College	166	75.6	5.29	44	6.00	5.76
	3,052	73.8	4.78	842	5.83	5.64
Total Non Lower Mainland	4,638	74.0	4.85	1,343	5.86	5.66
Lower Mainland						
<u>Public</u>						
BCIT	151	75.4	5.31	36	6.30	6.06
Capilano College	358	70.8	5.06	110	5.59	5.42
Douglas College	340	71.5	4.71	86	5.51	5.34
Kwantlen University College	353	71.4	4.65	87	5.55	5.38
UC of the Fraser Valley	170	73.3	5.39	62	6.23	6.08
Langara College	538	70.2	5.09	149	5.93	5.83
	1,910	71.5	4.98	530	5.79	5.64
<u>Private</u>						
Columbia College	136	71.2	4.03	47	4.28	4.26
Coquitlam College	69	70.0	3.78	17	4.33	4.48
	205	70.8	3.95	64	4.29	4.32
Total Lower Mainland	2,115	71.4	4.88	594	5.63	5.49
Total B.C. College Transfers	6,753	73.1	4.86	1,937	5.79	5.61

BEST COPY AVAILABLE

Table 11
Course Performance of B.C. College Transfers Admitted To UVic
(1993/94 to 1997/98)
For Selected Courses

Region/College	BIOC200			BIOL210			BIOL215		
	Admis- sion Average	Avg. Cr Grade	N	Admis- sion Average	Avg. Cr Grade	N	Admis- sion Average	Avg. Cr Grade	N
Non Lower Mainland									
<u>Northern B.C.</u>									
College of New Caledonia	76.3	4.38	13	71.6	4.66	3	75.6	5.33	3
Northern Lights College	71.3	4.33	3			1			0
Northwest Community College	74.8	3.25	8			1	70.5	4.00	9
	75.2	4.00	24	73.4	4.80	5	71.8	4.33	12
<u>Interior/Kootenays</u>									
College of the Rockies (EKCC)	72.7	3.60	10	66.6	4.33	3	75.0	4.75	4
Okanagan University College	75.1	3.70	47	73.6	5.60	5	74.0	5.68	25
Selkirk College	75.5	3.93	15			2	73.8	4.46	15
UC of the Cariboo	73.8	3.23	30	66.0	3.00	4	73.2	4.65	26
	74.5	3.59	102	69.5	4.00	14	73.7	4.98	70
<u>Vancouver Island</u>									
Camosun College	73.1	3.12	85	72.0	3.85	21	72.0	4.04	61
Malaspina University-College	73.9	3.41	29	76.8	6.22	9	73.8	4.64	25
North Island College	75.2	4.23	13			1	79.7	5.25	4
	73.5	3.30	127	73.4	4.64	31	72.8	4.26	90
Total Non Lower Mainland	74.1	3.48	253	72.3	4.48	50	73.1	4.56	172
Lower Mainland									
<u>Public</u>									
BCTT			0			1			0
Capilano College	71.0	4.00	6			2	70.5	4.00	11
Douglas College	69.7	3.55	9	77.0	4.00	3	70.3	3.72	11
Kwantlen University College	70.1	4.18	16	70.0	5.66	3	71.7	4.33	9
UC of the Fraser Valley	70.8	4.40	5			1	71.0	3.50	4
Langara College	66.6	2.35	14	68.5	3.50	4	68.0	3.64	14
	69.2	3.55	50	72.1	4.21	14	70.0	3.85	49
<u>Private</u>									
Columbia College			2			1			1
Coquitlam College			2			0			0
	72.0	1.75	4			1			1
Total Lower Mainland	69.4	3.42	54	72.1	4.27	15	70.0	3.86	50
Total B.C. College Transfers	73.2	3.47	307	72.3	4.43	65	72.4	4.40	222
Total B.C. High School Entrants	4.24	686		4.34	810		4.46	660	

BEST COPY AVAILABLE

Table 11 Cont'd)
Academic Performance of B.C. College Transfers Admitted To UVic
(1993/94 to 1997/98)
For Selected Courses

	<u>BIOL220</u>			<u>BIOL225</u>			<u>BIOL230</u>		
	<u>Admis- sion</u>	<u>Avg. Crs Grade</u>	<u>N</u>	<u>Admis- sion</u>	<u>Avg. Crs Grade</u>	<u>N</u>	<u>Admis- sion</u>	<u>Avg. Crs Grade</u>	<u>N</u>
Region/College									
Non Lower Mainland									
<u>Northern B.C.</u>									
College of New Caledonia	76.6	5.33	3	77.1	4.71	7	74.8	5.75	8
Northern Lights College			1			0			0
Northwest Community College			0	72.2	3.14	7	71.3	3.00	6
	<u>78.0</u>	<u>4.75</u>	<u>4</u>	<u>74.7</u>	<u>3.93</u>	<u>14</u>	<u>73.3</u>	<u>4.57</u>	<u>14</u>
<u>Interior/Kootenays</u>									
College of the Rockies (EKCC)	75.0	5.33	3	71.2	4.60	5	74.0	5.50	4
Okanagan University College	71.8	5.62	8	77.6	5.16	25	74.1	5.44	27
Selkirk College	72.1	3.71	7	76.6	4.91	12	74.1	5.56	16
UC of the Cariboo	68.6	5.33	3	73.6	4.11	27	72.5	4.66	21
	<u>71.9</u>	<u>4.90</u>	<u>21</u>	<u>75.4</u>	<u>4.67</u>	<u>69</u>	<u>73.6</u>	<u>5.23</u>	<u>68</u>
<u>Vancouver Island</u>									
Camosun College	71.5	3.59	32	72.1	3.87	78	71.3	4.30	55
Makaspina University-College	75.5	5.07	14	73.2	4.57	21	73.8	5.28	25
North Island College			2	78.3	4.83	6			2
	<u>72.8</u>	<u>3.96</u>	<u>48</u>	<u>72.7</u>	<u>4.06</u>	<u>105</u>	<u>72.3</u>	<u>4.65</u>	<u>82</u>
Total Non Lower Mainland	<u>72.8</u>	<u>4.27</u>	<u>73</u>	<u>73.8</u>	<u>4.27</u>	<u>188</u>	<u>72.9</u>	<u>4.89</u>	<u>164</u>
Lower Mainland									
<u>Public</u>									
BCIT			1			0			0
Capilano College	66.6	4.60	5	70.1	4.00	6	69.0	5.33	3
Douglas College	75.0	1.33	3	70.2	3.60	10	67.0	3.50	4
Kwantlen University College	69.1	4.60	10	70.3	4.54	11	67.3	5.33	6
UC of the Fraser Valley			1	71.0	4.25	4			2
Langara College	66.4	3.00	7	68.7	4.30	10	67.7	4.00	10
	<u>69.2</u>	<u>3.89</u>	<u>27</u>	<u>69.9</u>	<u>4.14</u>	<u>41</u>	<u>68.0</u>	<u>4.36</u>	<u>25</u>
<u>Private</u>									
Columbia College			1			1			1
Coquitlam College			0			0			0
			<u>1</u>			<u>1</u>			<u>1</u>
Total Lower Mainland	<u>69.4</u>	<u>3.79</u>	<u>28</u>	<u>70.0</u>	<u>4.09</u>	<u>42</u>	<u>68.2</u>	<u>4.35</u>	<u>26</u>
Total B.C. College Transfers	71.9	4.13	101	73.1	4.24	230	72.3	4.81	190
Total B.C. High School Entrants		4.21	800		4.58	620		5.41	387

BEST COPY AVAILABLE

Table 11 Cont'd)
Academic Performance of B.C. College Transfers Admitted To UVic
(1993/94 to 1997/98)
For Selected Courses

	<u>CHEM231</u>			<u>CHEM232</u>			<u>ECON245</u>		
	Admis- sion Average	Avg. Crs Grade	N	Admis- sion Average	Avg. Crs Grade	N	Admis- sion Average	Avg. Crs Grade	N
Region/College									
Non Lower Mainland									
<u>Northern B.C.</u>									
College of New Caledonia	74.4	3.64	14	76.3	2.83	6	73.0	5.00	5
Northern Lights College	71.0	2.50	4			0			2
Northwest Community College	71.5	2.33	15	75.0	3.66	3	73.0	3.25	4
	<u>72.7</u>	<u>2.91</u>	<u>33</u>	<u>75.9</u>	<u>3.11</u>	<u>9</u>	<u>73.3</u>	<u>4.64</u>	<u>11</u>
<u>Interior/Kootenays</u>									
College of the Rockies (EKCC)	72.4	3.93	15	71.0	2.50	4			2
Okanagan University College	74.5	3.80	55	72.7	3.04	25	71.1	4.40	32
Selkirk College	73.4	2.55	29	75.0	5.14	7	67.5	2.57	7
UC of the Cariboo	73.7	2.85	35	73.8	3.18	11	75.5	6.83	6
	<u>73.8</u>	<u>3.30</u>	<u>134</u>	<u>73.2</u>	<u>3.34</u>	<u>47</u>	<u>71.2</u>	<u>4.42</u>	<u>47</u>
<u>Vancouver Island</u>									
Camosun College	72.5	2.62	134	74.1	3.39	48	72.0	4.57	83
Malaspina University-College	73.1	3.68	44	71.1	3.25	20	70.8	3.33	30
North Island College	73.6	3.46	15	76.5	5.11	9	74.6	4.00	3
	<u>72.7</u>	<u>2.93</u>	<u>193</u>	<u>73.6</u>	<u>3.55</u>	<u>77</u>	<u>71.8</u>	<u>4.23</u>	<u>116</u>
Total Non Lower Mainland	<u>73.1</u>	<u>3.06</u>	<u>360</u>	<u>73.6</u>	<u>3.45</u>	<u>133</u>	<u>71.7</u>	<u>4.31</u>	<u>174</u>
Lower Mainland									
<u>Public</u>									
BCIT			0			0			2
Capilano College	71.3	4.00	11	74.0	4.40	5	67.9	4.50	24
Douglas College	69.8	3.55	18	72.8	3.71	7	69.3	5.07	28
Kwantlen University College	70.5	4.90	21	69.1	2.81	11	68.9	4.64	28
UC of the Fraser Valley	68.2	3.00	4			2	70.0	3.33	3
Langara College	67.6	2.68	25	67.8	3.66	6	66.9	5.23	39
	<u>69.4</u>	<u>3.67</u>	<u>79</u>	<u>70.6</u>	<u>3.64</u>	<u>31</u>	<u>68.3</u>	<u>4.92</u>	<u>124</u>
<u>Private</u>									
Columbia College	71.2	2.57	7			1	70.7	5.38	39
Coquitlam College	71.2	3.50	4			0	67.7	3.55	20
	<u>71.2</u>	<u>2.91</u>	<u>11</u>			<u>1</u>	<u>69.7</u>	<u>4.76</u>	<u>59</u>
Total Lower Mainland	<u>69.6</u>	<u>3.58</u>	<u>90</u>	<u>70.6</u>	<u>3.59</u>	<u>32</u>	<u>68.7</u>	<u>4.87</u>	<u>183</u>
Total B.C. College Transfers	<u>72.4</u>	<u>3.16</u>	<u>450</u>	<u>73.0</u>	<u>3.47</u>	<u>165</u>	<u>70.1</u>	<u>4.59</u>	<u>357</u>
Total B.C. High School Entrants		<u>3.91</u>	<u>981</u>		<u>4.53</u>	<u>315</u>		<u>4.79</u>	<u>259</u>

BEST COPY AVAILABLE

Table 11 Cont'd)
Academic Performance of B.C. College Transfers Admitted To UVic
(1993/94 to 1997/98)
For Selected Courses

Region/College	ENGL200			ENGL201			ENGL225		
	Admis- sion Average	Avg. Crs Grade	N	Admis- sion Average	Avg. Crs Grade	N	Admis- sion Average	Avg. Crs Grade	N
Non Lower Mainland									
<u>Northern B.C.</u>									
College of New Caledonia	78.1	5.33	6	70.2	4.00	7	75.5	5.33	6
Northern Lights College			2			1			1
Northwest Community College			1	66.2	1.75	4	77.5	5.25	4
	78.0	5.55	9	69.4	3.42	12	75.5	5.09	11
<u>Interior/Kootenays</u>									
College of the Rockies (EKCC)			1			1	75.5	4.75	4
Okanagan University College	73.1	4.55	20	73.6	4.9	30	75.2	5.53	47
Selkirk College	76.1	4.83	6	75.0	6.25	4	75.4	5.30	13
UC of the Cariboo	72.6	5.20	5	74.1	5.07	14	74.0	5.61	13
	73.6	4.62	32	74.0	5.10	49	75.0	5.46	77
<u>Vancouver Island</u>									
Camosun College	74.7	4.84	38	73.6	4.92	56	75.0	5.17	114
Malaspina University-College	76.3	4.55	18	73.8	3.36	19	75.9	5.62	50
North Island College	74.3	5.62	8	75.2	4.44	9	77.7	6.00	7
	75.1	4.86	64	73.8	4.52	84	75.4	5.34	171
Total Non Lower Mainland	74.9	4.85	105	73.5	4.62	145	75.3	5.36	259
Lower Mainland									
<u>Public</u>									
BCIT			0			0			1
Capilano College	70.3	4.27	11	71.7	4.00	14	73.0	4.72	11
Douglas College	78.0	4.33	3	73.6	6.33	3	69.7	4.37	8
Kwantlen University College	72.6	5.00	10	73.3	5.77	9	70.8	5.71	7
UC of the Fraser Valley	74.1	5.12	8	71.7	5.25	8	71.7	5.25	4
Langara College	71.2	4.75	4	64.6	4.37	8	69.2	4.16	18
	72.5	4.72	36	70.8	4.85	42	70.6	4.65	49
<u>Private</u>									
Columbia College			0			0	71.1	4.15	13
Coquitlam College			0			0	72.5	3.50	4
			0			0	71.4	4.00	17
Total Lower Mainland	72.5	4.72	36	70.8	4.85	42	70.8	4.48	66
Total B.C. College Transfers	74.3	4.81	141	72.9	4.67	187	74.4	5.18	325
Total B.C. High School Entrants		5.30	302		5.01	291		5.86	243

BEST COPY AVAILABLE

Table 11 Cont'd)
Academic Performance of B.C. College Transfers Admitted To UVic
(1993/94 to 1997/98)
For Selected Courses

	<u>ES 300A</u>			<u>MATH200</u>			<u>MATH201</u>		
	<u>Admis- sion</u>	<u>Avg. Crns</u>	<u>N</u>	<u>Admis- sion</u>	<u>Avg. Crns</u>	<u>N</u>	<u>Admis- sion</u>	<u>Avg. Crns</u>	<u>N</u>
<u>Region/College</u>	<u>Average</u>	<u>Grade</u>		<u>Average</u>	<u>Grade</u>		<u>Average</u>	<u>Grade</u>	
Non Lower Mainland									
<u>Northern B.C.</u>									
College of New Caledonia	79.3	7.33	3	70.2	0.78	14	70.0	2.16	6
Northern Lights College			1			0			0
Northwest Community College			2	69.2	1.00	5	75.2	1.80	5
	76.0	6.17	6	69.9	0.84	19	72.4	2.00	11
<u>Interior/Kootenays</u>									
College of the Rockies (EKCC)			1	75.9	2.66	12	75.9	4.61	13
Okanagan University College	74.6	5.54	33	77.7	2.60	75	76.5	3.82	78
Selkirk College	79.2	6.13	15	77.3	1.40	22	75.5	2.52	25
UC of the Cariboo	71.7	5.90	10	73.6	2.61	21	74.0	2.61	21
	75.2	5.72	59	76.8	2.40	130	75.9	3.47	137
<u>Vancouver Island</u>									
Camosun College	73.5	5.53	75	74.8	1.98	68	74.2	3.40	90
Malaspina University-College	76.4	5.82	29	72.0	2.32	25	73.8	2.47	44
North Island College	79.2	6.25	4	75.7	1.77	9	81.5	4.33	6
	74.5	5.63	108	74.2	2.04	102	74.4	3.15	140
Total Non Lower Mainland	74.8	5.68	173	75.2	2.14	251	75.0	3.26	288
Lower Mainland									
<u>Public</u>									
BCIT			0	73.0	3.00	3	74.5	5.00	4
Capilano College	71.6	5.70	17	71.2	5.20	10	69.8	4.22	18
Douglas College	70.4	5.14	7	74.7	4.42	7	71.8	3.63	19
Kwantlen University College	70.1	5.78	14	68.3	3.33	15	69.3	4.42	19
UC of the Fraser Valley	71.5	4.50	6	75.4	2.60	15	73.7	4.44	18
Langara College	71.7	5.42	21	69.5	2.70	20	70.0	3.90	22
	71.2	5.46	65	71.4	3.36	70	71.0	4.15	100
<u>Private</u>									
Columbia College			0	73.8	3.28	7	71.7	3.47	17
Coquitlam College			0	74.3	1.00	3	68.2	3.27	11
			0	74.0	2.60	10	70.3	3.39	28
Total Lower Mainland	71.2	5.46	65	71.7	3.26	80	70.9	3.98	128
Total B.C. College Transfers	73.8	5.62	238	74.4	2.41	331	73.6	3.48	416
Total B.C. High School Entrants		6.25	172		3.19	577		4.21	613

BEST COPY AVAILABLE

Table 11 Cont'd)
Academic Performance of B.C. College Transfers Admitted To UVic
(1993/94 to 1997/98)
For Selected Courses

	<u>STAT255</u>			<u>STAT260</u>			<u>PHIL331</u>		
	<u>Admis- sion</u>	<u>Avg. Crs Grade</u>	<u>N</u>	<u>Admis- sion</u>	<u>Avg. Crs Grade</u>	<u>N</u>	<u>Admis- sion</u>	<u>Avg. Crs Grade</u>	<u>N</u>
Region/College									
Non Lower Mainland									
<u>Northern B.C.</u>									
College of New Caledonia	78.2	5.50	14	72.5	1.57	7	69.8	5.00	5
Northern Lights College	68.6	4.33	3			0			0
Northwest Community College	71.3	2.68	16			2	71.6	5.33	3
	74.0	4.03	33	74.5	2.55	9	70.5	5.12	8
<u>Interior/Kootenays</u>									
College of the Rockies (EKCC)	73.0	4.33	12	74.7	3.75	4			1
Okanagan University College	74.7	4.63	85	73.9	2.74	51	72.0	4.25	24
Selkirk College	75.8	3.47	36	75.6	2.61	26	67.8	4.00	5
UC of the Cariboo	73.4	3.93	29	72.8	3.00	14	75.6	5.20	5
	74.6	4.22	162	74.2	2.79	95	71.9	4.34	35
<u>Vancouver Island</u>									
Camosun College	73.6	3.61	147	73.4	2.30	92	73.2	5.16	55
Makspina University-College	73.5	3.84	46	74.9	2.31	22	75.0	5.27	18
North Island College	75.3	4.00	8	78.5	2.71	7	72.6	4.22	9
	73.6	3.68	201	74.0	2.33	121	73.5	5.08	82
Total Non Lower Mainland	74.1	3.93	396	74.1	2.53	225	72.9	4.88	125
Lower Mainland									
<u>Public</u>									
BCIT			1			0	72.2	5.44	9
Capilano College	69.0	3.25	16	71.3	4.08	12	71.0	4.71	14
Douglas College	71.6	2.06	16	68.6	2.35	17	75.6	5.37	8
Kwantlen University College	69.8	3.80	15	68.4	2.78	14	71.4	5.14	7
UC of the Fraser Valley	72.0	6.20	10	75.3	5.69	13			2
Langara College	68.2	3.26	26	68.6	3.64	25	68.8	4.50	10
	70.0	3.52	84	70.0	3.61	81	71.5	4.96	50
<u>Private</u>									
Columbia College	74.8	3.00	6	71.5	2.75	16			0
Coquitlam College			2	69.1	2.42	7			0
	73.6	3.00	8	70.8	2.65	23			0
Total Lower Mainland	70.3	3.48	92	70.2	3.40	104	71.5	4.96	50
Total B.C. College Transfers	73.3	3.85	488	72.9	3.00	329	72.5	4.90	175
Total B.C. High School Entrants		4.45	852		3.08	362		5.41	162

BEST COPY AVAILABLE

Table 11 Cont'd)
Academic Performance of B.C. College Transfers Admitted To UVic
(1993/94 to 1997/98)
For Selected Courses

	<u>POL1240</u>			<u>PSYC201</u>			<u>PSYC210</u>		
	<u>Admis- sion</u>	<u>Avg. Crs Grade</u>	<u>N</u>	<u>Admis- sion</u>	<u>Avg. Crs Grade</u>	<u>N</u>	<u>Admis- sion</u>	<u>Avg. Crs Grade</u>	<u>N</u>
Region/College									
Non Lower Mainland									
<u>Northern B.C.</u>									
College of New Caledonia			2	74.0	5.83	12	75.1	4.55	9
Northern Lights College			1			2	76.0	3.00	3
Northwest Community College	74.4	3.00	5	73.4	3.66	15	74.1	3.61	13
	<u>74.3</u>	<u>4.13</u>	<u>8</u>	<u>74.0</u>	<u>4.65</u>	<u>29</u>	<u>74.7</u>	<u>3.88</u>	<u>25</u>
<u>Interior/Kootenays</u>									
College of the Rockies (EKCC)			2	71.2	5.20	10	70.2	3.00	14
Okanagan University College	72.7	4.85	21	73.6	5.41	43	73.8	4.60	60
Selkirk College	72.2	3.80	5	76.0	6.43	16	76.3	4.80	21
UC of the Cariboo	72.9	4.81	11	76.1	6.14	7	71.8	4.45	11
	<u>72.5</u>	<u>4.71</u>	<u>39</u>	<u>74.0</u>	<u>5.66</u>	<u>76</u>	<u>73.6</u>	<u>4.41</u>	<u>106</u>
<u>Vancouver Island</u>									
Camosun College	73.2	3.80	65	72.1	4.44	156	72.3	3.31	157
Makaspina University-College	73.6	4.60	10	74.6	4.97	34	74.8	3.96	30
North Island College	75.3	3.00	3	74.0	4.45	22	75.1	4.10	19
	<u>73.3</u>	<u>3.87</u>	<u>78</u>	<u>72.7</u>	<u>4.53</u>	<u>212</u>	<u>72.9</u>	<u>3.48</u>	<u>206</u>
Total Non Lower Mainland	<u>73.1</u>	<u>4.15</u>	<u>125</u>	<u>73.1</u>	<u>4.81</u>	<u>317</u>	<u>73.3</u>	<u>3.80</u>	<u>337</u>
Lower Mainland									
<u>Public</u>									
BCIT			1			0			0
Capilano College	69.1	3.90	10	72.0	5.38	31	72.0	4.30	33
Douglas College	67.2	4.00	4	70.7	4.41	17	68.5	3.35	17
Kwantlen University College	68.6	2.80	10	70.9	4.20	34	70.9	3.02	45
UC of the Fraser Valley			0	71.6	5.92	13	71.7	4.62	16
Langara College	72.0	4.46	15	68.9	4.46	26	68.9	4.12	33
	<u>69.9</u>	<u>3.90</u>	<u>40</u>	<u>70.8</u>	<u>4.77</u>	<u>121</u>	<u>70.5</u>	<u>3.78</u>	<u>144</u>
<u>Private</u>									
Columbia College			0	75.6	4.88	9	72.3	3.07	13
Coquitlam College			0			2	71.0	2.83	6
	<u>0.0</u>	<u>0.00</u>	<u>0</u>	<u>73.5</u>	<u>4.63</u>	<u>11</u>	<u>71.9</u>	<u>2.99</u>	<u>19</u>
Total Lower Mainland	<u>69.9</u>	<u>3.90</u>	<u>40</u>	<u>71.0</u>	<u>4.76</u>	<u>132</u>	<u>70.7</u>	<u>3.69</u>	<u>163</u>
Total B.C. College Transfers	<u>72.4</u>	<u>4.09</u>	<u>165</u>	<u>72.5</u>	<u>4.80</u>	<u>449</u>	<u>72.4</u>	<u>3.77</u>	<u>500</u>
Total B.C. High School Entrants	<u>4.46</u>	<u>2.74</u>	<u>72.0</u>	<u>5.44</u>	<u>360</u>	<u>74.7</u>	<u>4.51</u>	<u>348</u>	

BEST COPY AVAILABLE

Table 11 Cont'd)
Academic Performance of B.C. College Transfers Admitted To UVic
(1993/94 to 1997/98)
For Selected Courses

	PSYC215A			PSYC330			PSYC331		
	Admis- sion Average	Avg. Crs Grade	N	Admis- sion Average	Avg. Crs Grade	N	Admis- sion Average	Avg. Crs Grade	N
Region/College									
Non Lower Mainland									
Northern B.C.									
College of New Caledonia	73.3	4.66	15	74.0	5.25	4	71.8	5.00	5
Northern Lights College	76.0	4.00	3			1	76.0	7.33	3
Northwest Community College	74.0	4.00	15	71.5	4.50	4	68.5	4.75	4
	73.9	4.30	33	73.8	4.89	9	71.8	5.50	12
Interior/Kootenays									
College of the Rockies (EKCC)	69.6	3.76	13	71.5	4.83	6	73.6	6.62	8
Okanagan University College	73.3	5.15	53	74.1	6.47	38	71.7	6.24	33
Selkirk College	76.7	6.05	18	76.2	5.71	14	75.2	6.66	15
UC of the Cariboo	75.0	5.50	14	71.8	6.09	11	73.0	6.64	17
	73.7	5.18	98	73.9	6.11	69	72.9	6.46	73
Vancouver Island									
Camosun College	71.6	3.72	208	72.9	5.28	152	73.0	5.38	164
Malaspina University-College	73.9	4.46	50	76.6	6.05	38	74.7	5.82	34
North Island College	73.8	4.33	24	75.0	5.27	11	73.8	5.25	16
	72.2	3.90	282	73.7	5.43	201	73.3	5.44	214
Total Non Lower Mainland	72.7	4.24	413	73.8	5.58	279	73.2	5.69	299
Lower Mainland									
Public									
BCIT			0			0			0
Capilano College	71.0	4.75	40	72.1	6.22	22	72.9	6.88	26
Douglas College	70.4	3.42	21	69.0	5.09	11	67.2	5.12	8
Kwantlen University College	70.9	3.65	41	70.7	4.78	23	71.5	5.50	24
UC of the Fraser Valley	73.0	4.70	20	72.4	6.30	13	71.8	6.77	9
Langara College	67.9	4.43	37	67.4	4.86	30	68.6	5.50	30
	70.4	4.21	159	70.0	5.36	99	70.7	5.96	97
Private									
Columbia College	69.4	3.22	9	69.8	4.15	13	73.8	4.60	5
Coquitlam College	69.1	2.50	10	68.0	3.80	5			2
	69.2	2.84	19	69.3	4.05	18	71.3	4.14	7
Total Lower Mainland	70.3	4.06	178	69.9	5.16	117	70.7	5.83	104
Total B.C. College Transfers	72.0	4.18	591	72.6	5.45	396	72.5	5.73	403
Total B.C. High School Entrants		5.21	547		6.22	160		6.21	197

BEST COPY AVAILABLE

Table 11 Cont'd)
Academic Performance of B.C. College Transfers Admitted To UVic
(1993/94 to 1997/98)
For Selected Courses

	<u>PSYC335</u>			<u>SOCB05A</u>			<u>COM 202</u>		
	<u>Admis- sion</u>	<u>Avg. Crs Grade</u>	<u>N</u>	<u>Admis- sion</u>	<u>Avg. Crs Grade</u>	<u>N</u>	<u>Admis- sion</u>	<u>Avg. Crs Grade</u>	<u>N</u>
Region/College									
Non Lower Mainland									
<u>Northern B.C.</u>									
College of New Caledonia			2	71.6	4.83	6	73.7	5.00	4
Northern Lights College			0			0			0
Northwest Community College	70.5	3.00	4	70.5	3.14	7	76.4	4.00	5
	71.3	4.00	6	71.0	3.92	13	75.2	4.44	9
<u>Interior/Kootenays</u>									
College of the Rockies (EKCC)			2	77.6	5.66	3			2
Okanagan University College	71.6	5.66	27	72.3	5.35	31	74.7	4.30	50
Selkirk College	76.2	6.40	10	75.0	5.40	5	73.8	3.90	11
UC of the Cariboo	74.1	5.60	10	73.0	6.57	14	73.8	4.54	11
	73.1	5.79	49	73.0	5.69	53	74.4	4.27	74
<u>Vancouver Island</u>									
Camosun College	72.8	4.91	109	72.4	5.46	126	74.3	3.81	81
Malaspina University College	73.9	5.51	31	73.5	5.80	21	74.9	4.24	41
North Island College	74.3	5.25	8	77.6	5.60	5	76.6	4.30	10
	73.1	5.05	148	72.7	5.51	152	74.7	3.98	132
Total Non Lower Mainland	73.1	5.20	203	72.7	5.46	218	74.6	4.10	215
Lower Mainland									
<u>Public</u>									
BCIT			0			1			1
Capilano College	70.2	5.00	27	70.2	5.17	28	71.6	4.60	15
Douglas College	70.1	5.00	12	71.9	6.09	11	67.5	2.50	8
Kwantlen University College	70.0	4.66	18	67.8	4.80	21	71.5	3.50	6
UC of the Fraser Valley	72.5	6.75	8	71.6	6.77	9	70.3	4.75	8
Langara College	68.4	4.64	17	68.1	5.56	23	68.8	4.53	15
	70.0	5.02	82	69.5	5.48	93	70.0	4.15	53
<u>Private</u>									
Columbia College	71.7	4.53	13			1	70.8	3.46	13
Coquitlam College			2			2	73.0	2.33	3
	70.8	4.39	15	77.7	5.67	3	71.2	3.25	16
Total Lower Mainland	70.1	4.92	97	69.8	5.48	96	70.3	3.94	69
Total B.C. College Transfers	72.1	5.11	300	71.8	5.47	314	73.5	4.06	284
Total B.C. High School Entrants		6.28	122		5.72	163		5.00	318

BEST COPY AVAILABLE

Table 11 Cont'd)
Academic Performance of B.C. College Transfers Admitted To UVic
(1993/94 to 1997/98)
For Selected Courses

<u>Region/College</u>	<u>COM220</u>			<u>COM240</u>			<u>COM250</u>		
	<u>Admis- sion</u>	<u>Avg. CrS</u>	<u>N</u>	<u>Admis- sion</u>	<u>Avg. CrS</u>	<u>N</u>	<u>Admis- sion</u>	<u>Avg. CrS</u>	<u>N</u>
	<u>Average</u>	<u>Grade</u>		<u>Average</u>	<u>Grade</u>		<u>Average</u>	<u>Grade</u>	
Non Lower Mainland									
<u>Northern B.C.</u>									
College of New Caledonia	75.0	5.75	4	75.5	4.16	6	75.5	5.00	6
Northern Lights College			1			1			1
Northwest Community College	76.4	6.00	5	76.6	5.20	5	76.4	4.40	5
	<u>74.9</u>	<u>5.70</u>	<u>10</u>	<u>75.3</u>	<u>4.41</u>	<u>12</u>	<u>75.2</u>	<u>4.67</u>	<u>12</u>
<u>Interior/Kootenays</u>									
College of the Rockies (EKCC)	78.5	6.00	4	80.6	4.33	3	78.5	4.50	4
Okanagan University College	74.4	5.55	56	74.4	4.34	55	74.6	4.35	53
Selkirk College	74.4	5.00	11	74.6	4.66	12	74.7	4.42	14
UC of the Cariboo	75.1	6.43	16	74.6	4.47	23	75.0	5.19	21
	<u>74.7</u>	<u>5.66</u>	<u>87</u>	<u>74.7</u>	<u>4.41</u>	<u>93</u>	<u>74.9</u>	<u>4.56</u>	<u>92</u>
<u>Vancouver Island</u>									
Camosun College	75.1	5.67	90	74.9	4.79	129	75.1	4.41	124
Makaspina University-College	75.3	5.11	36	74.5	4.70	62	74.6	4.32	43
North Island College	77.8	5.61	13	77.7	5.54	11	77.8	4.66	12
	<u>75.4</u>	<u>5.52</u>	<u>139</u>	<u>74.9</u>	<u>4.80</u>	<u>202</u>	<u>75.2</u>	<u>4.41</u>	<u>179</u>
Total Non Lower Mainland	<u>75.1</u>	<u>5.58</u>	<u>236</u>	<u>74.9</u>	<u>4.67</u>	<u>307</u>	<u>75.1</u>	<u>4.47</u>	<u>283</u>
Lower Mainland									
<u>Public</u>									
BCIT			2			2	76.3	4.00	3
Capilano College	72.4	5.00	21	72.2	4.16	18	71.7	4.44	18
Douglas College	69.6	4.62	8	70.2	3.64	14	70.8	3.28	7
Kwantlen University College	70.3	4.00	6	72.9	5.36	11	74.2	4.81	11
UC of the Fraser Valley	68.8	5.62	8	70.2	4.12	8	71.0	5.50	8
Langara College	71.2	5.28	21	73.8	4.08	36	71.0	4.52	25
	<u>71.2</u>	<u>5.07</u>	<u>66</u>	<u>72.6</u>	<u>4.20</u>	<u>89</u>	<u>71.9</u>	<u>4.51</u>	<u>72</u>
<u>Private</u>									
Columbia College	71.1	4.50	20	70.5	3.52	21	70.8	3.43	23
Coquitlam College	73.7	4.35	14	72.2	3.66	12	72.2	3.08	12
	<u>72.2</u>	<u>4.44</u>	<u>34</u>	<u>71.1</u>	<u>3.57</u>	<u>33</u>	<u>71.3</u>	<u>3.31</u>	<u>35</u>
Total Lower Mainland	<u>71.5</u>	<u>4.86</u>	<u>100</u>	<u>72.2</u>	<u>4.03</u>	<u>122</u>	<u>71.7</u>	<u>4.12</u>	<u>107</u>
Total B.C. College Transfers	<u>74.1</u>	<u>5.36</u>	<u>336</u>	<u>74.1</u>	<u>4.49</u>	<u>429</u>	<u>74.1</u>	<u>4.37</u>	<u>390</u>
Total B.C. High School Entrants	<u>6.14</u>	<u>3.41</u>		<u>5.40</u>	<u>2.95</u>		<u>5.19</u>	<u>3.20</u>	

BEST COPY AVAILABLE

Table 11 Cont'd
Academic Performance of B.C. College Transfers Admitted To UVic
(1993/94 to 1997/98)
For Selected Courses

Region/College	COM260			ENGR240			NURS330		
	Admis- sion Average	Avg. Crs Grade	N	Admis- sion Average	Avg. Crs Grade	N	Admis- sion Average	Avg. Crs Grade	N
Non Lower Mainland									
<u>Northern B.C.</u>									
College of New Caledonia	75.5	5.33	6	69.0	6.00	3			0
Northern Lights College			1			0			1
Northwest Community College	76.6	5.60	5			1			1
	75.3	5.08	12	71.0	6.25	4			2
<u>Interior/Kootenays</u>									
College of the Rockies (EKCC)	76.6	6.00	3	78.0	5.42	7			2
Okanagan University College	74.9	4.53	54	77.5	5.72	44	69.0	5.40	5
Selkirk College	74.7	4.57	14	79.3	5.00	23	72.2	4.50	6
UC of the Cariboo	75.0	5.72	18	75.5	5.13	22			1
	74.9	4.83	89	77.5	5.39	96	72.1	5.29	14
<u>Vancouver Island</u>									
Camosun College	74.7	4.71	120	74.5	5.11	54	71.3	6.07	14
Malaspina University College	75.0	4.91	56	75.7	5.11	35			1
North Island College	77.7	5.58	12	74.0	3.83	6	82.3	8.00	3
	75.0	4.83	188	74.9	5.03	95	73.2	6.44	18
Total Non Lower Mainland	75.0	4.84	289	76.1	5.23	195	70.6	5.91	34
Lower Mainland									
<u>Public</u>									
BCIT			1			2	75.4	6.51	41
Capilano College	72.5	4.23	17	69.9	5.23	13	70.0	6.14	7
Douglas College	68.7	3.50	12	73.1	4.33	6	76.2	6.38	21
Kwantlen University College	73.0	5.00	11	70.8	5.42	14	76.4	5.90	11
UC of the Fraser Valley	70.2	5.62	8	76.3	6.10	20	71.5	6.57	7
Langara College	70.6	4.16	24	72.8	4.66	9	65.2	6.55	9
	71.1	4.37	73	73.0	5.42	64	74.1	6.39	96
<u>Private</u>									
Columbia College	70.9	3.40	20	72.0	3.66	6			0
Coquitlam College	71.6	3.61	13			1			0
	71.2	3.48	33	72.0	3.42	7			0
Total Lower Mainland	71.1	4.09	106	72.9	5.22	71	74.1	6.39	96
Total B.C. College Transfers	73.9	4.64	395	75.3	5.33	266	73.7	6.26	130
Total B.C. High School Entrants		5.42	280		5.41	420		7.00	35

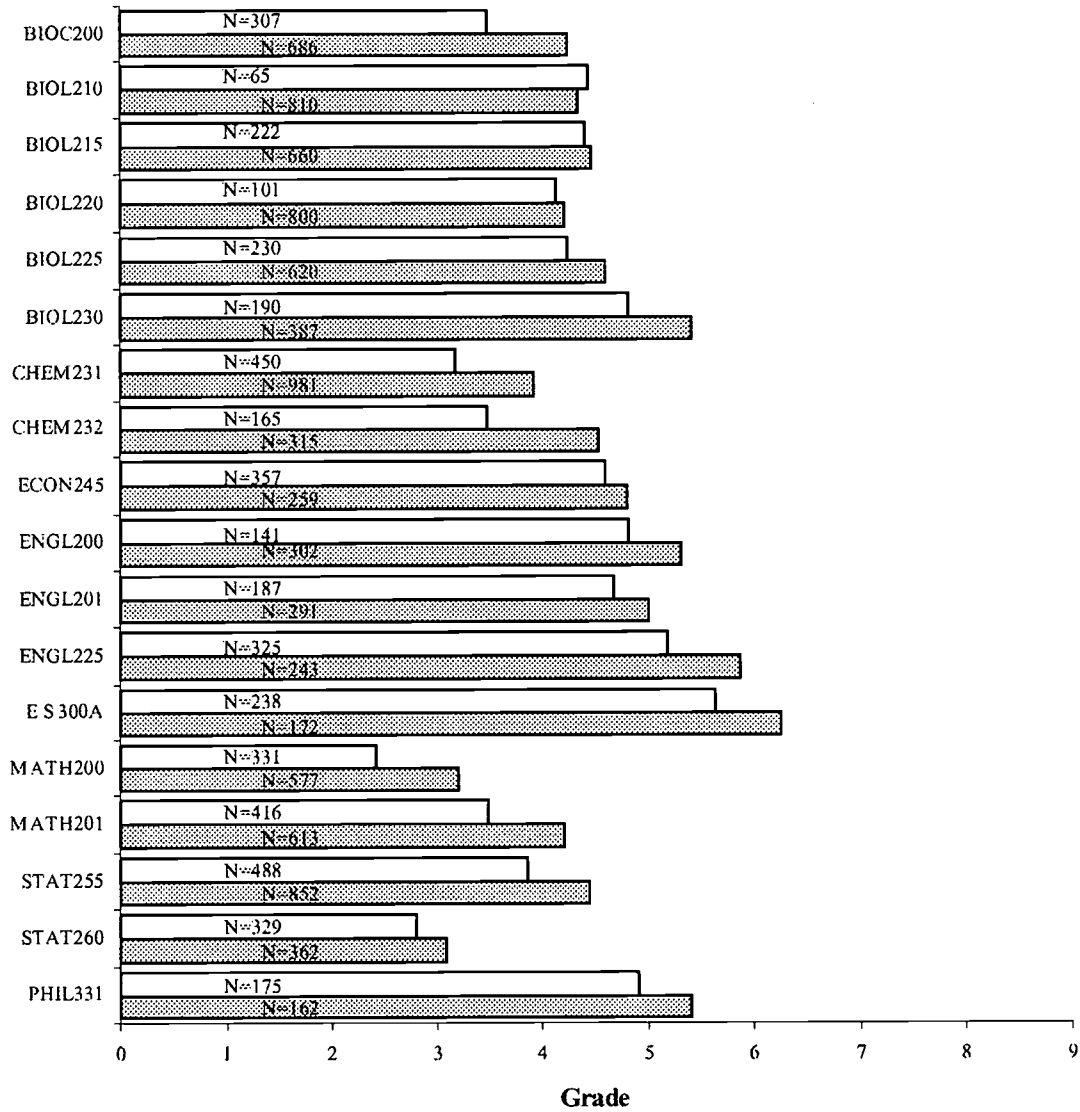
BEST COPY AVAILABLE

Table 11 Cont'd)
Academic Performance of B.C. College Transfers Admitted To UVic
(1993/94 to 1997/98)
 For Selected Courses

	<u>NURS341</u>			<u>NURS350</u>		
	<u>Admis- sion</u>	<u>Avg. CrS</u>	<u>N</u>	<u>Admis- sion</u>	<u>Avg. CrS</u>	<u>N</u>
<u>Region/College</u>	<u>Average</u>	<u>Grade</u>		<u>Average</u>	<u>Grade</u>	
Non Lower Mainland						
<u>Northern B.C.</u>						
College of New Caledonia			0			0
Northern Lights College			1			0
Northwest Community College			1			1
			<u>2</u>			<u>1</u>
<u>Interior/Kootenays</u>						
College of the Rockies (EKCC)			1			2
Okanagan University College	76.8	8.22	9	76.5	6.33	9
Selkirk College	74.8	7.60	10	74.2	6.50	10
UC of the Cariboo	75.0	7.00	6	73.8	7.00	5
	<u>75.6</u>	<u>7.65</u>	<u>26</u>	<u>75.2</u>	<u>6.61</u>	<u>26</u>
<u>Vancouver Island</u>						
Camosun College	74.6	7.32	100	74.5	5.60	102
Makaspina University-College	77.3	7.11	9	77.7	6.00	10
North Island College	78.7	7.76	17	78.7	6.35	17
	<u>75.3</u>	<u>7.36</u>	<u>126</u>	<u>75.3</u>	<u>5.73</u>	<u>129</u>
Total Non Lower Mainland	<u>74.9</u>	<u>7.40</u>	<u>154</u>	<u>75.3</u>	<u>5.90</u>	<u>156</u>
Lower Mainland						
<u>Public</u>						
BCIT	75.4	7.04	24	75.0	6.25	27
Capilano College	72.8	7.16	12	72.6	7.45	11
Douglas College	77.4	6.56	16	75.3	6.06	15
Kwantlen University College	74.0	7.41	12	72.5	7.00	11
UC of the Fraser Valley	69.4	7.16	6	73.0	5.66	6
Langara College	72.4	7.07	91	72.6	6.84	90
	<u>73.4</u>	<u>7.05</u>	<u>161</u>	<u>73.3</u>	<u>6.68</u>	<u>160</u>
<u>Private</u>						
Columbia College			1			1
Coquitlam College			1			1
			<u>2</u>			<u>2</u>
Total Lower Mainland	<u>73.4</u>	<u>7.06</u>	<u>163</u>	<u>73.3</u>	<u>6.69</u>	<u>162</u>
Total B.C. College Transfers	<u>74.3</u>	<u>7.23</u>	<u>347</u>	<u>74.3</u>	<u>6.30</u>	<u>318</u>
Total B.C. High School Entrants		<u>7.39</u>	<u>28</u>		<u>7.32</u>	<u>28</u>

BEST COPY AVAILABLE

Figure 2
Academic Performance Comparison
of B.C. High School Entrants and B.C. College Transfers
Admitted to UVic

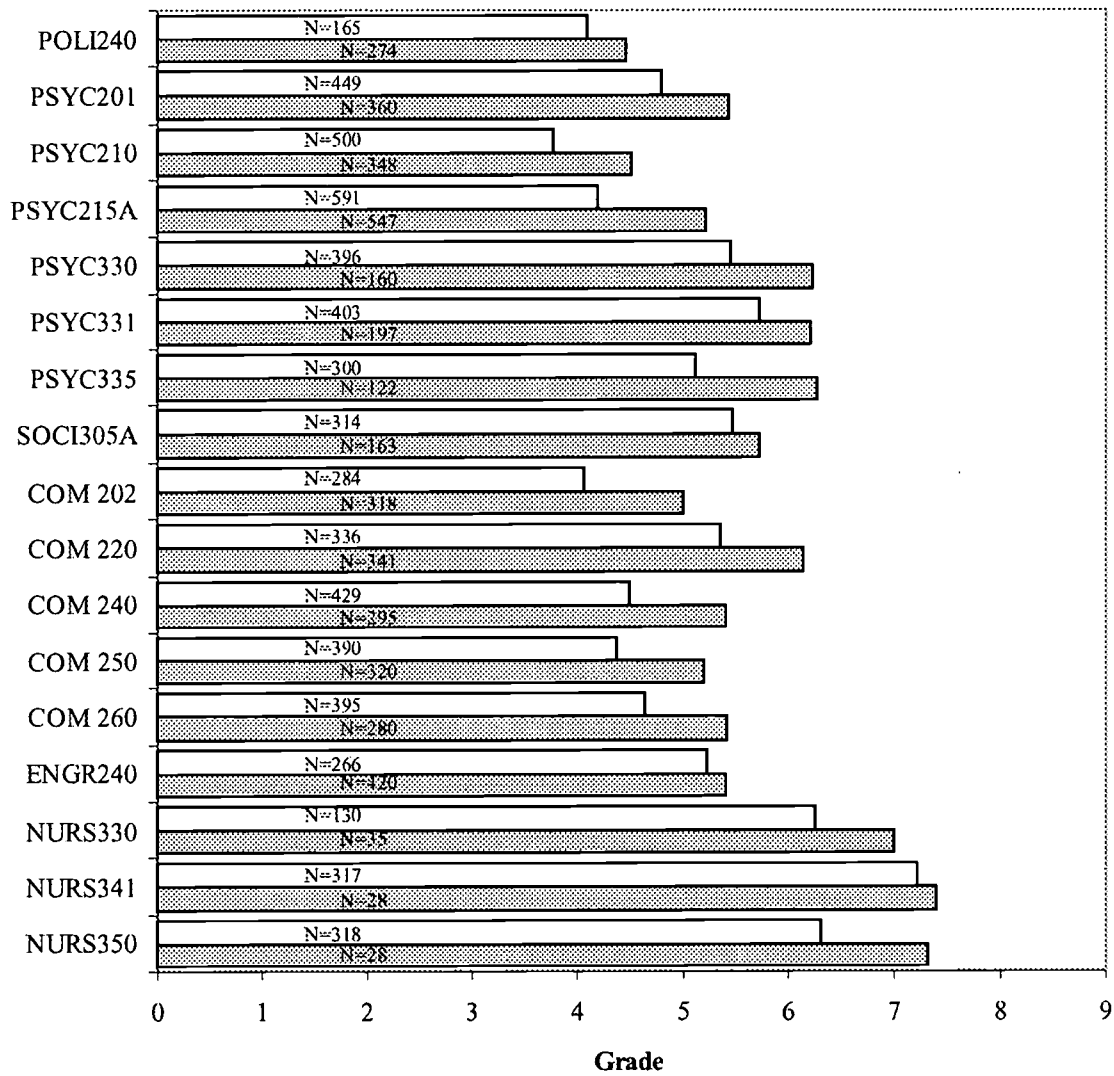


B.C. College Transfer B.C. High School

Source: Table 11



Figure 2 (Cont'd)
Academic Performance Comparison
of B.C. High School Entrants and B.C. College Transfers
Admitted to UVic



B.C. College Transfer B.C. High School

Source: Table 11

Table 12
Graduation Rates of B.C. College Transfers Admitted to UVic by Total Transfer Credit Units
(1993/94 - 1994/95)

Region/College	<15		15-17		17.5-19.5		20-22	
	# of Students	% Grad	# of Students	% Grad	# of Students	% Grad	# of Students	% Grad
Non Lower Mainland								
<u>Northern B.C.</u>								
College of New Caledonia	9	11.1	11	90.9	4	75.0	7	57.1
Northern Lights College	4	50.0	1		1		0	
Northwest Community College	4	25.0	12	50.0	7	28.6	4	25.0
	17	23.5	24	66.7	12	41.7	11	45.5
<u>Interior/Kootenays</u>								
College of the Rockies (EKCC)	7	71.4	9	44.4	7	42.9	2	
Okanagan University College	38	42.1	52	50.0	22	50.0	9	77.8
Selkirk College	10	60.0	22	59.1	6	66.7	4	25.0
UC of the Cariboo	33	54.5	21	52.4	8	37.5	1	
	88	51.1	104	51.9	43	48.8	16	68.8
<u>Vancouver Island</u>								
Camosun College	158	34.2	123	50.4	88	46.6	44	52.3
Malaspina University-College	24	66.7	46	58.7	19	52.6	8	50.0
North Island College	17	47.1	10	40.0	6	100.0	2	
	199	39.2	179	52.0	113	50.4	54	51.9
Total Non Lower Mainland	304	41.8	307	53.1	168	49.4	81	54.3
Lower Mainland								
<u>Public</u>								
BCIT	14	35.7	2		1		1	
Capilano College	22	54.5	21	61.9	19	47.4	4	100.0
Douglas College	15	53.3	10	30.0	10	30.0	9	77.8
Kwantlen University College	18	50.0	19	73.7	13	84.6	7	71.4
UC of the Fraser Valley	16	68.8	6	66.7	9	55.6	3	66.7
Langara College	18	55.6	18	44.4	28	46.4	5	80.0
	103	53.4	76	57.9	80	51.3	29	79.3
<u>Private</u>								
Columbia College	10	40.0	11	81.8	8	75.0	8	87.5
Coquitlam College	2		4	25.0	2		3	33.3
	12	41.7	15	66.7	10	70.0	11	72.7
Total Lower Mainland	115	52.2	91	59.3	90	53.3	40	77.5
Total B.C. College Transfers	419	44.6	398	54.5	258	50.8	121	62.0

BEST COPY AVAILABLE

Table 12 (Cont'd)
Graduation Rates of B.C. College Transfers Admitted to UVic by Total Transfer Credit Units
(1993/94 - 1994/95)

Region/College	22.5-24.5		25-27		≥27.5		Total	
	# of Students	% Grad	# of Students	% Grad	# of Students	% Grad	# of Students	% Grad
Non Lower Mainland								
<u>Northern B.C.</u>								
College of New Caledonia	6	50.0	8	62.5	13	61.5	58	58.6
Northern Lights College	0		0		2		8	50.0
Northwest Community College	5	0.0	0		3	100.0	35	37.1
	11	27.3	8	62.5	18	72.2	101	50.5
<u>Interior/Kootenays</u>								
College of the Rockies (EKCC)	3	100.0	7	57.1	41	61.0	76	60.5
Okanagan University College	20	75.0	20	75.0	104	66.3	265	60.0
Selkirk College	8	62.5	7	100.0	38	57.9	95	61.1
UC of the Cariboo	11	72.7	8	62.5	36	77.8	118	62.7
	42	73.8	42	73.8	219	65.8	554	60.8
<u>Vancouver Island</u>								
Camosun College	85	58.8	96	64.6	191	70.2	785	54.3
Malaspina University-College	35	62.9	33	69.7	127	68.5	292	64.7
North Island College	5	40.0	9	66.7	7	71.4	56	57.1
	125	59.2	138	65.9	325	69.5	1,133	57.1
Total Non Lower Mainland	178	60.7	188	67.6	562	68.1	1,788	57.9
Lower Mainland								
<u>Public</u>								
BCIT	2		8	62.5	24	66.7	52	55.8
Capilano College	11	63.6	15	73.3	37	64.9	129	62.0
Douglas College	9	88.9	10	30.0	31	74.2	94	58.5
Kwantlen University College	15	66.7	7	42.9	23	52.2	102	62.7
UC of the Fraser Valley	7	71.4	9	88.9	18	72.2	68	70.6
Langara College	23	43.5	16	56.3	51	68.6	159	56.0
	67	59.7	65	60.0	184	66.8	604	60.4
<u>Private</u>								
Columbia College	6	100.0	3	66.7	5	100.0	51	76.5
Coquitlam College	5	40.0	2		4	75.0	22	50.0
	11	72.7	5	80.0	9	88.9	73	68.5
Total Lower Mainland	78	61.5	70	61.4	193	67.9	677	61.3
Total B.C. College Transfers	256	60.9	258	65.9	755	68.1	2,465	58.8

BEST COPY AVAILABLE

Table 13
Cumulative UVic GPA of B.C. College Transfers Admitted to UVic Who Graduated
(1993/94 to 1997/98)

<u>Region/College</u>	<u><3</u>	<u>3-3.49</u>	<u>3.5-3.99</u>	<u>4.0-4.49</u>	<u>4.5-4.99</u>	<u>5.5-5.49</u>	<u>5.5-5.99</u>
Non Lower Mainland							
<u>Northern B.C.</u>							
College of New Caledonia	1	0	1	4	2	5	8
Northern Lights College	0	0	0	2	2	0	0
Northwest Community College	1	0	1	1	2	2	1
	<u>2</u>	<u>0</u>	<u>2</u>	<u>7</u>	<u>6</u>	<u>7</u>	<u>9</u>
<u>Interior/Kootenays</u>							
College of the Rockies (EKCC)	1	2	3	3	6	6	8
Okanagan University College	2	11	11	18	27	22	34
Selkirk College	0	2	5	5	7	9	10
UC of the Cariboo	0	4	2	11	10	12	12
	<u>3</u>	<u>19</u>	<u>21</u>	<u>37</u>	<u>50</u>	<u>49</u>	<u>64</u>
<u>Vancouver Island</u>							
Camosun College	19	14	29	45	66	72	72
Malaspina University-College	4	8	15	19	25	39	33
North Island College	1	2	4	4	1	5	5
	<u>24</u>	<u>24</u>	<u>48</u>	<u>68</u>	<u>92</u>	<u>116</u>	<u>110</u>
Total Non Lower Mainland	29	43	71	112	148	172	183
Lower Mainland							
<u>Public</u>							
BCIT	0	1	1	4	2	5	3
Capilano College	1	4	13	12	12	14	18
Douglas College	4	5	9	5	11	8	13
Kwantlen University College	2	2	9	10	14	16	6
UC of the Fraser Valley	0	2	0	5	7	5	10
Langara College	1	5	7	12	20	20	12
	<u>8</u>	<u>19</u>	<u>39</u>	<u>48</u>	<u>66</u>	<u>68</u>	<u>62</u>
<u>Private</u>							
Columbia College	4	6	11	7	8	6	2
Coquitlam College	0	3	4	1	2	6	0
	<u>4</u>	<u>9</u>	<u>15</u>	<u>8</u>	<u>10</u>	<u>12</u>	<u>2</u>
Total Lower Mainland	12	28	54	56	76	80	64
Total B.C. College Transfers	41	71	125	168	224	252	247
Total B.C. High School Entrants	1	4	21	38	47	58	78

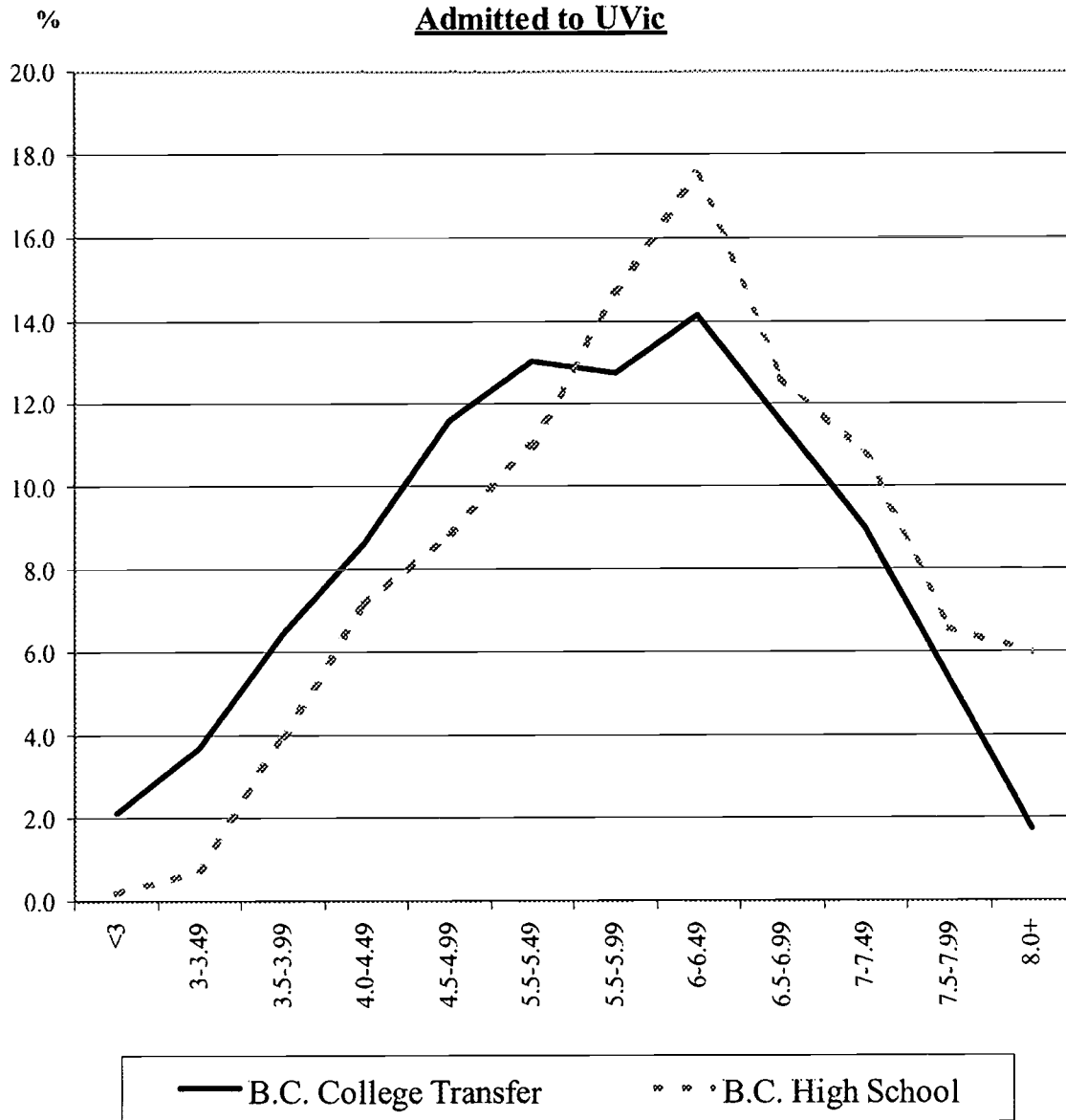
BEST COPY AVAILABLE

Table 13 (Cont'd)
Cumulative UVic GPA of B.C. College Transfers Admitted to UVic Who Graduated
(1993/94 to 1997/98)

<u>Region/College</u>	<u>6-6.49</u>	<u>6.5-6.99</u>	<u>7-7.49</u>	<u>7.5-7.99</u>	<u>8.0+</u>	<u># of Students</u>	<u>Cumulative GPA</u>
Non Lower Mainland							
<u>Northern B.C.</u>							
College of New Caledonia	9	3	4	5	0	42	5.91
Northern Lights College	0	0	0	0	0	4	4.43
Northwest Community College	2	5	1	3	0	19	5.90
	<u>11</u>	<u>8</u>	<u>5</u>	<u>8</u>	<u>0</u>	<u>65</u>	<u>5.82</u>
<u>Interior/Kootenays</u>							
College of the Rockies (EKCC)	12	9	5	0	0	55	5.68
Okanagan University College	34	24	18	11	4	216	5.63
Selkirk College	13	10	7	3	1	72	5.75
UC of the Cariboo	15	14	9	4	0	93	5.70
	<u>74</u>	<u>57</u>	<u>39</u>	<u>18</u>	<u>5</u>	<u>436</u>	<u>5.67</u>
<u>Vancouver Island</u>							
Camosun College	76	61	58	25	10	547	5.62
Malaspina University-College	43	29	19	12	5	251	5.62
North Island College	7	8	2	3	2	44	5.76
	<u>126</u>	<u>98</u>	<u>79</u>	<u>40</u>	<u>17</u>	<u>842</u>	<u>5.63</u>
Total Non Lower Mainland	211	163	123	66	22	1,343	5.65
Lower Mainland							
<u>Public</u>							
BCIT	4	6	4	5	1	36	6.06
Capilano College	12	12	6	5	1	110	5.42
Douglas College	13	9	2	7	0	86	5.34
Kwantlen University College	6	8	6	7	1	87	5.38
UC of the Fraser Valley	4	10	15	1	3	62	6.08
Langara College	21	14	19	13	5	149	5.83
	<u>60</u>	<u>59</u>	<u>52</u>	<u>38</u>	<u>11</u>	<u>530</u>	<u>5.64</u>
<u>Private</u>							
Columbia College	2	1	0	0	0	47	4.26
Coquitlam College	1	0	0	0	0	17	4.48
	<u>3</u>	<u>1</u>	<u>0</u>	<u>0</u>	<u>0</u>	<u>64</u>	<u>4.32</u>
Total Lower Mainland	63	60	52	38	11	594	5.49
Total B.C. College Transfers	274	223	175	104	33	1,937	5.60
Total B.C. High School Entrants	93	67	57	35	32	531	6.05

BEST COPY AVAILABLE

Figure 3
Cumulative UVic GPA Comparison
of B.C. High School Entrants and B.C. College Transfers
Admitted to UVic



Source: Table13

Section C

PROFILE OF B.C. COLLEGE TRANSFER STUDENTS WHO GRADUATED

Table 14
Academic Performance of B.C. College Transfers Admitted to UVic Who Graduated
(admitted and graduated between 1993/94 and 1997/98)

<u>Region/College</u>	<u># of Students</u>	<u>Admission Average</u>	<u>1st Session GPA</u>	<u>Graduating GPA</u>	<u>Cumulative GPA</u>
Non Lower Mainland					
<u>Northern B.C.</u>					
College of New Caledonia	42	75.8	5.28	6.15	5.91
Northern Lights College	4	76.0	3.79	5.08	4.43
Northwest Community College	19	73.8	5.51	6.13	5.90
	<u>65</u>	<u>75.2</u>	<u>5.26</u>	<u>6.08</u>	<u>5.82</u>
<u>Interior/Kootenays</u>					
College of the Rockies (EKCC)	55	73.3	5.34	5.89	5.68
Okanagan University College	216	74.5	5.29	5.81	5.63
Selkirk College	72	75.2	5.20	6.02	5.75
UC of the Cariboo	93	75.2	5.32	5.86	5.70
	<u>436</u>	<u>74.6</u>	<u>5.29</u>	<u>5.87</u>	<u>5.67</u>
<u>Vancouver Island</u>					
Camosun College	547	74.4	5.22	5.82	5.62
Malaspina University-College	251	75.4	5.34	5.83	5.67
North Island College	44	76.2	5.38	6.00	5.76
	<u>842</u>	<u>74.8</u>	<u>5.26</u>	<u>5.83</u>	<u>5.64</u>
Total Non Lower Mainland	<u>1,343</u>	<u>74.8</u>	<u>5.27</u>	<u>5.86</u>	<u>5.66</u>
Lower Mainland					
<u>Public</u>					
BCIT	36	75.6	5.81	6.30	6.06
Capilano College	110	71.3	5.14	5.59	5.42
Douglas College	86	71.5	5.18	5.51	5.34
Kwantlen University College	87	71.9	5.19	5.55	5.38
UC of the Fraser Valley	62	73.4	5.73	6.23	6.08
Langara College	149	70.8	5.56	5.93	5.83
	<u>530</u>	<u>71.8</u>	<u>5.39</u>	<u>5.79</u>	<u>5.64</u>
<u>Private</u>					
Columbia College	47	69.7	4.05	4.28	4.26
Coquitlam College	17	69.8	4.41	4.33	4.48
	<u>64</u>	<u>69.7</u>	<u>4.15</u>	<u>4.29</u>	<u>4.32</u>
Total Lower Mainland	<u>594</u>	<u>71.6</u>	<u>5.25</u>	<u>5.63</u>	<u>5.49</u>
Total B.C. College Transfers	1,937	73.8	5.26	5.79	5.61

BEST COPY AVAILABLE

Table 15
Graduation Area of B.C. College Transfers Admitted to UVic
(1993/94 to 1997/98)

<u>Region/College</u>	<u>PACI</u>	<u>EDUC</u>	<u>ANTH</u>	<u>LING</u>	<u>COM</u>	<u>BIOL</u>	<u>NURS</u>	<u>S W</u>	<u>ENGN</u>	<u>CSC</u>	<u>CYC</u>
Non Lower Mainland											
<u>Northern B.C.</u>											
College of New Caledonia	0	5	0	2	3	3	0	1	0	0	1
Northern Lights College	0	0	1	0	0	0	0	0	0	0	0
Northwest Community College	0	3	0	0	2	1	1	5	0	0	1
	<u>0</u>	<u>8</u>	<u>1</u>	<u>2</u>	<u>5</u>	<u>4</u>	<u>1</u>	<u>6</u>	<u>0</u>	<u>0</u>	<u>2</u>
<u>Interior/Kootenays</u>											
College of the Rockies (EKCC)	0	27	0	0	3	3	0	1	1	1	0
Okanagan University College	3	22	3	1	21	24	6	3	8	7	4
Selkirk College	0	7	1	2	3	9	3	2	2	1	1
UC of the Cariboo	1	3	2	2	4	4	2	14	4	0	0
	<u>4</u>	<u>59</u>	<u>6</u>	<u>5</u>	<u>31</u>	<u>40</u>	<u>11</u>	<u>20</u>	<u>15</u>	<u>9</u>	<u>5</u>
<u>Vancouver Island</u>											
Camosun College	11	20	18	12	46	26	43	19	23	11	16
Malaspina University-College	3	11	9	2	25	9	8	13	2	4	6
North Island College	0	3	0	0	2	5	4	4	1	1	2
	<u>14</u>	<u>34</u>	<u>27</u>	<u>14</u>	<u>73</u>	<u>40</u>	<u>55</u>	<u>36</u>	<u>26</u>	<u>16</u>	<u>24</u>
Total Non Lower Mainland	18	101	34	21	109	84	67	62	41	25	31
Lower Mainland											
<u>Public</u>											
BCIT	0	0	0	0	0	0	13	0	21	0	0
Capilano College	0	5	3	0	3	4	7	3	2	0	4
Douglas College	1	10	1	2	3	5	5	5	1	2	0
Kwantlen University College	0	8	1	1	0	4	6	3	1	1	1
UC of the Fraser Valley	0	4	2	0	2	4	3	8	2	2	6
Langara College	5	6	2	2	7	2	31	4	1	1	2
	<u>6</u>	<u>33</u>	<u>9</u>	<u>5</u>	<u>15</u>	<u>19</u>	<u>65</u>	<u>23</u>	<u>28</u>	<u>6</u>	<u>13</u>
<u>Private</u>											
Columbia College	0	0	1	0	4	0	0	0	0	3	0
Coquitlam College	0	0	0	0	2	0	1	0	0	0	0
	<u>0</u>	<u>0</u>	<u>1</u>	<u>0</u>	<u>6</u>	<u>0</u>	<u>1</u>	<u>0</u>	<u>0</u>	<u>3</u>	<u>0</u>
Total Lower Mainland	6	33	10	5	21	19	66	23	28	9	13
Total B.C. College Transfers	24	134	44	26	130	103	133	85	69	34	44
Total B.C. High School Entrants	17	32	8	12	35	49	22	3	11	5	6

PACI - Pacific & Asian Studies, EDUC - Education, ANTH - Anthropology, LING - Linguistics, COM - Commerce, BIOL - Biology, NURS - Nursing, S W - Social Work, ENGN - Engineering, CSC - Computer Science, CYC - Child & Youth Care

BEST COPY AVAILABLE

Table 15 (Cont'd)
Graduation Area of B.C. College Transfers Admitted to UVic
(1993/94 to 1997/98)

<u>Region/College</u>	<u>VART</u>	<u>ECON</u>	<u>ENGL</u>	<u>GEOG</u>	<u>H A</u>	<u>HIST</u>	<u>P E</u>	<u>POLI</u>	<u>PSYC</u>	<u>SOCI</u>	<u>OTH</u>	<u># of Students</u>
Non Lower Mainland												
<u>Northern B.C.</u>												
College of New Caledonia	0	1	5	4	0	6	4	0	3	1	3	42
Northern Lights College	0	0	0	1	0	0	0	0	2	0	0	4
Northwest Community College	0	0	2	1	0	0	0	0	1	1	1	19
	<u>0</u>	<u>1</u>	<u>7</u>	<u>6</u>	<u>0</u>	<u>6</u>	<u>4</u>	<u>0</u>	<u>6</u>	<u>2</u>	<u>4</u>	<u>65</u>
<u>Interior/Kootenays</u>												
College of the Rockies (EKCC)	0	0	6	1	0	2	3	0	3	1	3	55
Okanagan University College	6	9	10	7	5	10	2	10	26	5	24	216
Selkirk College	0	1	7	4	0	7	1	1	12	1	7	72
UC of the Cariboo	2	3	10	2	2	7	6	4	7	2	12	93
	<u>8</u>	<u>13</u>	<u>33</u>	<u>14</u>	<u>7</u>	<u>26</u>	<u>12</u>	<u>15</u>	<u>48</u>	<u>9</u>	<u>46</u>	<u>436</u>
<u>Vancouver Island</u>												
Camosun College	6	22	41	40	6	40	1	12	65	16	53	547
Malaspina University-College	15	4	26	17	5	13	18	8	24	5	24	251
North Island College	3	0	5	1	1	3	1	0	6	0	2	44
	<u>24</u>	<u>26</u>	<u>72</u>	<u>58</u>	<u>12</u>	<u>56</u>	<u>20</u>	<u>20</u>	<u>95</u>	<u>21</u>	<u>79</u>	<u>842</u>
Total Non Lower Mainland	32	40	112	78	19	88	36	35	149	32	129	1,343
Lower Mainland												
<u>Public</u>												
BCIT	0	1	0	1	0	0	0	0	0	0	0	36
Capilano College	0	10	18	7	7	6	0	4	10	3	14	110
Douglas College	0	10	4	3	1	3	2	1	6	2	19	86
Kwantlen University College	0	9	9	3	3	10	0	2	10	5	10	87
UC of the Fraser Valley	1	1	5	5	0	4	0	1	7	0	5	62
Langara College	0	19	6	20	3	5	1	8	9	5	10	149
	<u>1</u>	<u>50</u>	<u>42</u>	<u>39</u>	<u>14</u>	<u>28</u>	<u>3</u>	<u>16</u>	<u>42</u>	<u>15</u>	<u>58</u>	<u>530</u>
<u>Private</u>												
Columbia College	0	32	0	0	0	0	0	0	6	0	1	47
Coquitlam College	0	11	0	0	0	0	0	0	0	0	3	17
	<u>0</u>	<u>43</u>	<u>0</u>	<u>0</u>	<u>0</u>	<u>0</u>	<u>0</u>	<u>0</u>	<u>6</u>	<u>0</u>	<u>4</u>	<u>64</u>
Total Lower Mainland	1	93	42	39	14	28	3	16	48	15	62	594
Total B.C. College Transfers	33	133	154	117	33	116	39	51	197	47	191	1,937
Total B.C. High School Entrants	10	21	39	28	10	20	1	19	48	16	127	531

VART - Visual Arts, ECON - Economics, ENGL - English, GEOG - Geography, H A - History in Art, HIST - History
P E - Physical Education, POLI - Political Science, PSYC - Psychology, SOCI - Sociology, OTH - Other

BEST COPY AVAILABLE

Table 16
Credentials Awarded to B.C. College Transfers Admitted to UVic
(1993/94 to 1997/98)

Region/College	# of												
	Students	BA	BCOM	BED	BENG	BFA	BMUS	BSC	BSN	BSW	CERT	DIPL	LLB
Non Lower Mainland													
<u>Northern B.C.</u>													
College of New Caledonia	521	500	3	11	0	0	0	6	0	1	0	0	0
Northern Lights College	4	2	0	0	0	0	0	2	0	0	0	0	0
Northwest Community College	19	7	2	3	0	0	0	1	1	5	0	0	0
	544	509	5	14	0	0	0	9	1	6	0	0	0
<u>Interior/Kootenays</u>													
College of the Rockies (EKCC)	55	6	3	34	1	0	0	9	0	1	1	0	0
Okanagan University College	216	98	21	22	8	7	2	48	6	3	1	0	0
Selkirk College	72	33	3	8	2	1	1	19	3	2	0	0	0
UC of the Cariboo	93	43	4	8	4	3	1	13	2	14	0	0	1
	436	180	31	72	15	11	4	89	11	20	2	0	1
<u>Vanouver Island</u>													
Camosun College	547	259	46	24	23	6	1	121	43	19	1	2	2
Malaspina University-College	251	118	25	27	2	19	1	35	8	13	2	1	0
North Island College	44	17	2	4	1	3	0	9	4	4	0	0	0
	842	394	73	55	26	28	2	165	55	36	3	3	2
Total Non Lower Mainland	1,822	1,083	109	141	41	39	6	263	67	62	5	3	3
Lower Mainland													
<u>Public</u>													
BCIT	36	0	0	0	21	0	0	2	13	0	0	0	0
Capilano College	110	76	3	6	2	1	2	9	7	3	0	0	1
Douglas College	86	34	3	5	1	3	15	15	5	5	0	0	0
Kwantlen University College	87	53	0	5	1	3	3	13	6	3	0	0	0
UC of the Fraser Valley	62	30	2	4	2	3	0	9	3	8	0	0	1
Langara College	149	79	7	4	1	1	2	19	31	4	0	0	1
	530	272	15	24	28	11	22	67	65	23	0	0	3
<u>Private</u>													
Columbia College	47	35	4	0	0	0	0	8	0	0	0	0	0
Coquitlam College	17	11	2	0	0	0	0	2	1	0	0	0	1
	64	46	6	0	0	0	0	10	1	0	0	0	1
Total Lower Mainland	594	318	21	24	28	11	22	77	66	23	0	0	4
Total B.C. College Transfers	2,416	1,401	130	165	69	50	28	340	133	85	5	3	7
Total B.C. High School Entrants	531	224	35	23	11	35	28	151	22	3	1	0	0

Percentage Distribution

Non Lower Mainland													
Northern B.C.	100.0	93.6	0.9	2.6	0.0	0.0	0.0	1.7	0.2	1.1	0.0	0.0	0.0
Interior/Kootenays	100.0	41.3	7.1	16.5	3.4	2.5	0.9	20.4	2.5	4.6	0.5	0.0	0.2
Vancouver Island	100.0	46.8	8.7	6.5	3.1	3.3	0.2	19.6	6.5	4.3	0.4	0.4	0.2
Total Non Lower Mainland	100.0	59.4	6.0	7.7	2.3	2.1	0.3	14.4	3.7	3.4	0.3	0.2	0.2
Lower Mainland													
Public	100.0	51.3	2.8	4.5	5.3	2.1	4.2	12.6	12.3	4.3	0.0	0.0	0.6
Private	100.0	71.9	9.4	0.0	0.0	0.0	0.0	15.6	1.6	0.0	0.0	0.0	1.6
Total Lower Mainland	100.0	53.5	3.5	4.0	4.7	1.9	3.7	13.0	11.1	3.9	0.0	0.0	0.7
Grand Total	100.0	58.0	5.4	6.8	2.9	2.1	1.2	14.1	5.5	3.5	0.2	0.1	0.3

BA - Bachelor of Arts, BCOM - Bachelor of Commerce, BED - Bachelor of Education, BENG - Bachelor of Engineering, BFA - Bachelor of Fine Arts, BMUS - Bachelor of Music, BSC - Bachelor of Science, BSN - Bachelor Science in Nursing, BSW - Bachelor of Social Work
 CERT - Certificate Programs, DIPL - Diploma Programs, LLB - Law

Table 17
Years to Graduation for B.C. College Transfers Admitted to UVic by Credential Awarded
(1993/94 to 1997/98)

<u>Region/College</u>	<u># of Students</u>	<u># of</u>											<u>Total</u>	
		<u>BA</u>	<u>BCOM</u>	<u>BED</u>	<u>BENG</u>	<u>BFA</u>	<u>BMUS</u>	<u>BSC</u>	<u>BSN</u>	<u>BSW</u>	<u>CERT</u>	<u>DIPL</u>		<u>LLB</u>
Non Lower Mainland														
<u>Northern B.C.</u>														
College of New Caledonia	42	2.8	3.2	3.8			3.3		2.1					3.1
Northern Lights College	4	3.7					3.4							3.5
Northwest Community College	19	3.0	3.2	3.7			2.7	2.4	3.4					3.2
	65	2.9	3.2	3.8			3.3	2.4	3.2					3.2
<u>Interior/Kootenays</u>														
College of the Rockies (EKCC)	55	3.1	3.5	3.1	4.2		3.4		2.1	1.7				3.1
Okanagan University College	216	2.5	3.2	2.9	3.9	2.4	3.7	2.9	1.5	2.9	1.7			2.7
Selkirk College	72	2.5	3.3	3.5	4.2	3.2	3.7	3.1	2.6	2.6				2.9
UC of the Cariboo	93	2.5	2.9	4.1	3.9	2.7	4.7	2.8	1.8	2.9			2.7	2.8
	436	2.5	3.2	3.2	4.0	2.6	3.0	1.9	2.8	1.7			2.7	2.8
<u>Vancouver Island</u>														
Carosun College	547	2.8	3.3	3.6	2.8	2.7	2.7	3.1	1.9	2.6	1.7	1.9	4.7	2.9
Malaspina University-College	251	2.3	3.3	3.4	3.8	2.1	2.7	2.9	1.8	1.9	1.7	4.1		2.6
North Island College	44	2.7	3.7	3.2	3.7	3.1	3.0	2.0	2.4					2.8
	842	2.6	3.3	3.5	2.9	2.3	2.7	3.1	1.9	2.3	1.7	2.6	4.7	2.8
Total Non Lower Mainland	1,343	2.6	3.3	3.4	3.3	2.4	3.5	3.0	1.9	2.6	1.7	2.6	4.0	2.8
Lower Mainland														
<u>Public</u>														
BCTI	36				3.0		3.0	3.0						3.0
Capilano College	110	2.7	3.3	3.3	4.2	2.7	3.2	2.9	1.8	2.6			3.7	2.7
Douglas College	86	2.5	2.2	3.1	4.2	3.0	2.5	3.1	2.4	2.9				2.7
Kwantlen University College	87	2.7		3.8	3.7	3.7	2.3	3.1	2.0	3.3				2.8
UC of the Fraser Valley	62	2.8	3.4	3.4	3.9	2.5		3.2	2.8	2.4			2.7	2.9
Langara College	149	2.6	2.8	3.8	2.4	4.7	2.2	3.0	1.9	2.5			2.7	2.6
	530	2.7	2.9	3.5	3.2	3.2	2.5	3.1	2.2	2.7			3.0	2.7
<u>Private</u>														
Columbia College	47	2.5	3.4				2.8							2.6
Coquitlam College	17	2.6	3.3				2.7	1.8					2.7	2.7
	64	2.5	3.4				2.8	1.8					2.7	2.6
Total Lower Mainland	594	2.6	3.0	3.5	3.2	3.2	2.5	3.0	2.2	2.7			3.0	2.7
Total B.C. College Transfers	1,937	2.6	3.2	3.4	3.3	2.5	2.7	3.0	2.0	2.6	1.7	2.6	3.4	2.8

BA - Bachelor of Arts, BCOM - Bachelor of Commerce, BED - Bachelor of Education, BENG - Bachelor of Engineering, BFA - Bachelor of Fine Arts, BMUS - Bachelor of Music, BSC - Bachelor of Science, BSN - Bachelor Science in Nursing, BSW - Bachelor of Social Work
 CERT - Certificate Programs, DIPL - Diploma Programs, LLB - Law

BEST COPY AVAILABLE

Section D

PROFILE OF STUDENTS WITH COLLEGE EXPERIENCE

Table 18
Students With College Experience Admitted To UVic By Year Of Admission
(Excludes College Transfer Students)
(1993/94 to 1997/98)

<u>Region/College</u>	<u>1993/94</u>	<u>1994/95</u>	<u>1995/96</u>	<u>1996/97</u>	<u>1997/98</u>	<u>Total</u>
Non Lower Mainland						
<u>Northern B.C.</u>						
College of New Caledonia	15	20	13	14	7	69
Northern Lights College	3	3	2	2	2	12
Northwest Community College	8	5	3	12	5	33
	<u>26</u>	<u>28</u>	<u>18</u>	<u>28</u>	<u>14</u>	<u>114</u>
<u>Interior/Kootenays</u>						
College of the Rockies (ERCC)	1	5	4	8	1	19
Okanagan University College	36	74	79	70	60	319
Selkirk College	10	14	11	7	5	47
UC of the Cariboo	18	38	37	50	26	169
	<u>65</u>	<u>131</u>	<u>131</u>	<u>135</u>	<u>92</u>	<u>554</u>
<u>Vancouver Island</u>						
Camosun College	131	116	135	90	94	566
Malaspina University-College	44	47	58	31	54	234
North Island College	13	9	4	11	18	55
	<u>188</u>	<u>172</u>	<u>197</u>	<u>132</u>	<u>166</u>	<u>855</u>
Total Non Lower Mainland	279	331	346	295	272	1,523
Lower Mainland						
<u>Public</u>						
BCIT	23	26	17	19	17	102
Capilano College	19	21	18	26	21	105
Douglas College	30	24	18	17	19	108
Kwantlen University College	11	12	24	23	15	85
UC of the Fraser Valley	10	14	15	14	12	65
Langara College	51	38	34	38	20	181
	<u>144</u>	<u>135</u>	<u>126</u>	<u>137</u>	<u>104</u>	<u>646</u>
<u>Private</u>						
Columbia College	2	3	6	2	0	13
Coquitlam College	0	0	5	2	4	11
	<u>2</u>	<u>3</u>	<u>11</u>	<u>4</u>	<u>4</u>	<u>24</u>
Total Lower Mainland	146	138	137	141	108	670
Total Students with College Experience	425	469	483	436	380	1,193

Percentage Distribution

Non Lower Mainland						
Northern B.C.	6.1	6.0	3.7	6.4	3.7	5.2
Interior/Kootenays	15.3	27.9	27.1	31.0	24.2	25.3
Vancouver Island	44.2	36.7	40.8	30.3	43.7	39.0
Total Non Lower Mainland	65.6	70.6	71.6	67.7	71.6	69.4
Lower Mainland						
Public	33.9	28.8	26.1	31.4	27.4	29.5
Private	0.5	0.6	2.3	0.9	1.1	1.1
Total Lower Mainland	34.4	29.4	28.4	32.3	28.4	30.6
Grand Total	100.0	100.0	100.0	100.0	100.0	100.0

Table 12
Students With College Experience Admitted To UVic By Age Interval
(Excludes College Transfer Students)
(1993/94 to 1997/98)

<u>Region/College</u>	<u><20</u>	<u>20-24</u>	<u>25-29</u>	<u>30-34</u>	<u>35-39</u>	<u>>39</u>	<u>Total</u>	<u>Average</u>
Non Lower Mainland								
<u>Northern B.C.</u>								
College of New Caledonia	8	20	10	9	11	11	69	29.7
Northern Lights College	0	4	2	2	3	1	12	30.4
Northwest Community College	5	6	3	6	4	9	33	31.8
	<u>13</u>	<u>30</u>	<u>15</u>	<u>17</u>	<u>18</u>	<u>21</u>	<u>114</u>	<u>30.4</u>
<u>Interior/Kootenays</u>								
College of the Rockies (EKCC)	1	3	6	4	3	2	19	30.4
Okanagan University College	18	80	55	33	57	76	319	38.0
Selkirk College	6	13	2	5	5	16	47	32.3
UC of the Cariboo	10	49	33	20	21	36	169	42.2
	<u>35</u>	<u>145</u>	<u>96</u>	<u>62</u>	<u>86</u>	<u>130</u>	<u>554</u>	<u>38.5</u>
<u>Vancouver Island</u>								
Camosun College	73	219	104	54	42	74	566	27.4
Malaspina University-College	21	84	32	26	23	48	234	29.7
North Island College	15	5	9	3	9	14	55	30.1
	<u>109</u>	<u>308</u>	<u>145</u>	<u>83</u>	<u>74</u>	<u>136</u>	<u>855</u>	<u>28.2</u>
Total Non Lower Mainland	157	483	256	162	178	287	1,523	32.1
Lower Mainland								
<u>Public</u>								
BCIT	3	11	22	26	14	26	102	33.0
Capilano College	19	29	26	6	7	18	105	28.3
Douglas College	5	37	14	19	15	18	108	30.6
Kwantlen University College	25	37	9	6	4	4	85	23.8
UC of the Fraser Valley	8	21	15	9	4	8	65	27.9
Langara College	12	51	37	25	24	32	181	30.1
	<u>72</u>	<u>186</u>	<u>123</u>	<u>91</u>	<u>68</u>	<u>106</u>	<u>646</u>	<u>29.3</u>
<u>Private</u>								
Columbia College	3	6	3	1	0	0	13	22.9
Coquitlam College	3	8	0	0	0	0	11	20.6
	<u>6</u>	<u>14</u>	<u>3</u>	<u>1</u>	<u>0</u>	<u>0</u>	<u>24</u>	<u>21.8</u>
Total Lower Mainland	78	200	126	92	68	106	670	29.0
Total Students with College Experience	235	683	382	254	246	393	2,193	31.2

Percentage Distribution

Non Lower Mainland								
Northern B.C.	11.4	26.3	13.2	14.9	15.8	18.4	100.0	
Interior/Kootenays	6.3	26.2	17.3	11.2	15.5	23.5	100.0	
Vancouver Island	12.7	36.0	17.0	9.7	8.7	15.9	100.0	
Total Non Lower Mainland	10.3	31.7	16.8	10.6	11.7	18.8	100.0	
Lower Mainland								
Public	11.1	28.8	19.0	14.1	10.5	16.4	100.0	
Private	25.0	58.3	12.5	4.2	0.0	0.0	100.0	
Total Lower Mainland	11.6	29.9	18.8	13.7	10.1	15.8	100.0	
Grand Total	10.7	31.1	17.4	11.6	11.2	17.9	100.0	

Table 20
Students With College Experience Admitted To UVic By Gender
(Excludes College Transfer Students)
(1993/94 to 1997/98)

<u>Region/College</u>	<u>Male</u>	<u>Female</u>	<u>Total</u>	<u>Percentage</u>	
				<u>Male</u>	<u>Female</u>
Non Lower Mainland					
<u>Northern B.C.</u>					
College of New Caledonia	12	57	69	17.4	82.6
Northern Lights College	2	10	12	16.7	83.3
Northwest Community College	7	26	33	21.2	78.8
	<u>21</u>	<u>93</u>	<u>114</u>	<u>18.4</u>	<u>81.6</u>
<u>Interior/Kootenays</u>					
College of the Rockies (EKCC)	8	11	19	42.1	57.9
Okanagan University College	63	256	319	19.7	80.3
Selkirk College	19	28	47	40.4	59.6
UC of the Cariboo	31	138	169	18.3	81.7
	<u>121</u>	<u>433</u>	<u>554</u>	<u>21.8</u>	<u>78.2</u>
<u>Vancouver Island</u>					
Camosun College	194	372	566	34.3	65.7
Malaspina University-College	68	166	234	29.1	70.9
North Island College	17	38	55	30.9	69.1
	<u>279</u>	<u>576</u>	<u>855</u>	<u>32.6</u>	<u>67.4</u>
Total Non Lower Mainland	421	1,102	1,523	27.6	72.4
Lower Mainland					
<u>Public</u>					
BCIT	35	67	102	34.3	65.7
Capilano College	38	67	105	36.2	63.8
Douglas College	30	78	108	27.8	72.2
Kwantlen University College	32	53	85	37.6	62.4
UC of the Fraser Valley	14	51	65	21.5	78.5
Langara College	45	136	181	24.9	75.1
	<u>194</u>	<u>452</u>	<u>646</u>	<u>30.0</u>	<u>70.0</u>
<u>Private</u>					
Columbia College	9	4	13	69.2	30.8
Coquitlam College	6	5	11	54.5	45.5
	<u>15</u>	<u>9</u>	<u>24</u>	<u>62.5</u>	<u>37.5</u>
Total Lower Mainland	209	461	670	31.2	68.8
Total Students with College Experience	630	1,563	2,193	28.7	71.3

BEST COPY AVAILABLE

Appendix

Definitions And Technical Notes

Session: The academic year at The University of Victoria is divided into two sessions: a four-month summer session (May to August), and an eight-month winter session (September to April). This contrasts with the semester or trimester system containing two or three four-month periods of study.

BC College Transfers: These are students admitted to the University of Victoria, primarily on the basis of their performance at a BC college or colleges, and who register and begin work in at least one UVic session. Those who withdraw, either in the first or a subsequent session, are included. For the purposes of this report, students who have earned transfer credits from more than one BC college are grouped with the college where the majority of these credits were earned. With few exceptions, BC college transfer students have earned a minimum of 12 units of transferable academic credit, at least half of which has been acquired at one or more BC colleges. In most instances, BC college transfers have earned 12 or more units of transfer at the one college they have attended.

BC High/Secondary School Students: These are students admitted to the University of Victoria, on the basis of their performance at a BC high school, who register and begin work in at least one UVic session. Those who withdraw, either in the first or a subsequent session, are included. Both students who enter UVic immediately after secondary school, and those who enter after some delay, are included.

Grading Systems: The University of Victoria uses a grade point system to evaluate course performance. A grade point is a numerical value given to a letter grade, with 9 equivalent to A⁺, 8 to A, 7 to A⁻, 6 to B⁺, 5 to B, 4 to B⁻, 3 to C⁺, 2 to C, 1 to D, and 0 to failure. The weighted average of such grades is called a grade point average. This compares with the four point (0-4) and percentage (0-100) systems used at other institutions. However, BC college transfers and BC high school students are admitted to UVic based on a percentage average. These admission averages are derived from a variety of incoming grading systems.

Comparing Grading Systems: Comparisons of, and conversions between the grading systems described above are difficult. For example, in Table 10 of this report, the conversion of admission average to a 9-point GPA scale would facilitate an analysis of whether students transferring to university experience a decline in GPA from admission GPA to first session GPA. Unfortunately, there is no direct mathematical linkage between a grade point and a percentage value (e.g. 90% does not automatically translate into a 9 GP). A 9 GP represents "A+" work, a level generally associated with percentage grades anywhere from 85% to 100%. While a midpoint (92.5%) could be construed to be equivalent to a GP of 9.0, the conversion requires sufficient estimation and interpolation to cast doubt on comparisons between "real" GPAs and "constructed" GPAs. (The potential error is even greater when a single admission average is converted to a single GPA, rather than when a number of individual course grades are converted to corresponding GPs and a GPA calculated.) Given that admission GPA and first session GPA might differ only slightly, the error introduced by estimating GPAs from admission averages renders any comparisons suspect.

Grade Point Average (GPA): The university recognizes three types of grade point averages for its students. The sessional GPA is based on all grades earned during a given winter or summer session. The graduating GPA of a student in a bachelor's degree program is based on grades in 300 and 400 level (and in Education 700 level) courses acceptable within the degree program being taken. The cumulative GPA is based on all courses taken while at the university. While other GPA measures and concepts might have

resulted in easier comparisons with other institutions, these are the measures accepted at UVic (and calculated/recorded on its student records system).

The Effect of Differing Academic Regulations: Universities adopt numerous academic policies/regulations that differ from institution to institution, and often use different terminology to refer to essentially similar concepts. Inter-institutional comparisons are therefore sometimes difficult. Caution should be exercised when comparing this report's findings to those in the corresponding Simon Fraser University report and forthcoming University of British Columbia report.

Graduation Rates: Graduation rates in this report are based on those students admitted in 1993/94 or 1994/95 who had graduated by May 1998. Because BC College Transfers have begun their work at UVic at a higher year level than BC High School Students, a higher percentage of the former will have graduated. The high school students who have graduated will include many who are highly-motivated and have proceeded through UVic at a full-time rate. As such, cohort comparisons of graduation rates should be made with caution.

Full-Time/Part-Time Status: All non-coop undergraduate students registered in at least twelve units of course work during a given winter session and all coop undergraduate students are classified as full-time. All non-coop undergraduate students registered in less than twelve units of course work during a given winter session are classified as part-time. Full-time and part-time status is not defined for summer sessions.



U.S. Department of Education
Office of Educational Research and Improvement (OERI)
National Library of Education (NLE)
Educational Resources Information Center (ERIC)



NOTICE

Reproduction Basis



This document is covered by a signed "Reproduction Release (Blanket)" form (on file within the ERIC system), encompassing all or classes of documents from its source organization and, therefore, does not require a "Specific Document" Release form.



This document is Federally-funded, or carries its own permission to reproduce, or is otherwise in the public domain and, therefore, may be reproduced by ERIC without a signed Reproduction Release form (either "Specific Document" or "Blanket").

EFF-089 (3/2000)